

Miko Marine Sea-Anchor

A drifting vessel represents a serious threat to life and environment. In addition a disabled vessel will normal drift beam to the seas and the roll motions experienced will make it difficult both to board the vessel and to effectuate a possible repair.

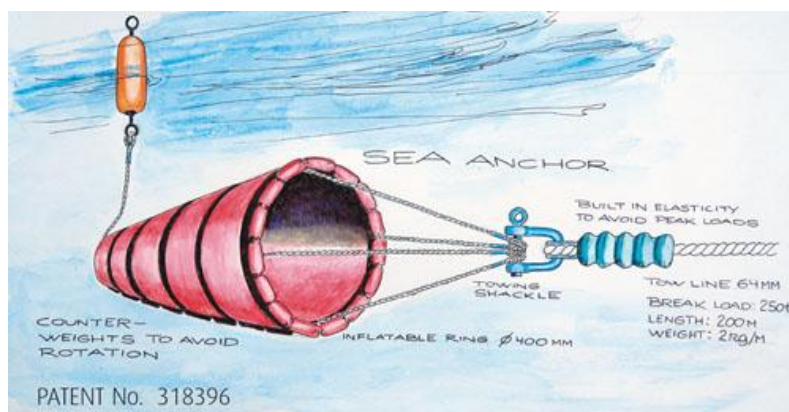
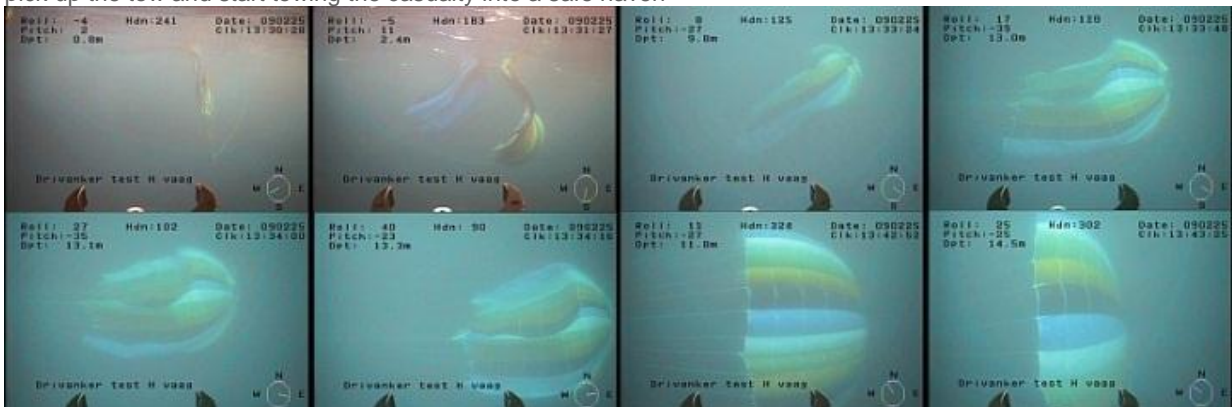
Miko's Sea-Anchor will rotate the bow of even large cargo vessels up against the weather and reduce their drift rate increasing the chances for a successful salvage operation. The combination of a sea-anchor (with diameter up to 40 meters), the synthetic fibre towing line and the pick-up buoy solution provides the salvor more time and when in place, a fast and secure way to connect and start the tow.

The Sea-Anchor may be used as a "stand alone" product, in combination with Emergency Towing Systems for tankers, or as a part of the ShipArrestor as presented earlier.

The sea anchor is self-activated when the anchor is pulled through the water.

The particulars of the Sea-Anchor are adjusted to optimize the effect to:

1. Increase drag force to reduce drift speed by up to 60 %.
2. The bow of the vessel will be heading towards the environmental forces from wind, waves and current, hence reducing exposed area and motions of the vessel.
3. The tow-line - sea-anchor combination attached to a pick-up buoy will allow the salvor to - efficiently and safely, pick up the tow and start towing the casualty into a safe haven



The tanker Braer hit rocks near the coast of the Shetland Islands and spilled its cargo of 85,000 tonnes of crude oil.



In 9 meter high waves and freezing temperatures the main engines of "MS Midnattsol" stopped at 04:00 a.m. in December 2003. 102 passengers were in their life boats when the engines were restarted only 200 meters from shore.



Provide your vessel with a Miko Marine Sea-Anchor!!!