

Our complete stations, made in GRP, Zinc alloy or Stainless Steel, are primarily used as control systems. Composed by control units or an ammeter, our boxes come standard-fitted with plastic cable glands.

Specifications

Material	GRP, zinc alloy or stainless steel
IP Rating	IP65 – IP66
Temperature	–20°C to +40°C (+50°C, +60°C)
Approvals	INERIS 03ATEX0122
Standards	Cenelec EN50014, EN50018, EN50019, EN50028, EN500281-1-1
Ex-Code	Ex e II or em II or ed IIC or emd IIC T6 to T4 IP65 or IP66 T85°C to T135°C ATEX II 2 GD



Pushbutton Station

Function	Label (pushbutton colour) and contact function	Insulated station with insulated unit	Metal station with metal unit	Stainless steel station with metal unit
1 pushbutton with spring return	Start (green) 1 NO	XAWG10	XAWF10	XAWFS10
1 pushbutton with spring return	Stop (red) 1 NC	XAWG11	XAWF11	XAWFS11
1 pushbutton, mushroom head Ø40 mm, with spring return	Stop (red) 1 NC	XAWG16	XAWF16	XAWFS16
1 pushbutton, mushroom head Ø40 mm, latching turn to release	Stop (red) 1 NC	XAWG17	XAWF17	XAWFS17
1 selector switch 2 positions stay put	Start/Stop 1 NO	XAWG13	XAWF13	XAWFS13
2 pushbuttons with spring return	Start (green) 1 NO Stop (red) 1 NC	XAWG21	XAWF21	XAWFS21
3 pushbuttons with spring return	Forward (green) 1 NO Stop (red) 1 NC Reverse (green) 1 NO	XAWG31	XAWF31	XAWFS31
1 pilot light, 2 pushbuttons with spring return	Red light unit 24-415V AC-DC Start (green) 1 NO Stop (red) 1 NC	XAWG34	XAWF34	XAWFS34

Measurement Station

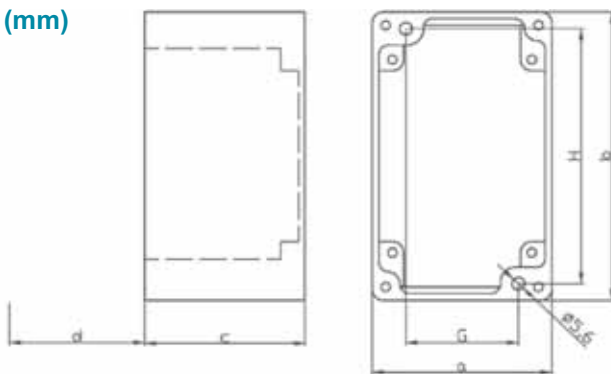
Function	Labels (pushbutton colour) and contact function	Insulated station with insulated unit	Metal station with metal unit	Stainless steel station with metal unit
1 ammeter		XAWG2812	XAWF2812	XAWFS2812
1 ammeter, 1 selector switch, 2 positions stay put	Start/Stop 1 NO	XAWG3812	XAWF3812	XAWFS3812
1 ammeter, 2 pushbuttons, spring return	Start (green) 1 NO Stop (red) 1 NC	XAWG382	XAWF482	XAWFS482

Cable gland: XAWG1... XAWG2... plastic cable gland for cable Ø 8 to 13 mm
 XAWG3... plastic cable gland for cable Ø 13 to 19 mm
 XAWF(S)1... XAWF(S)2... XAWF(S)3... brass cable gland for cable Ø 8,5 to 16 mm
 XAWF(S)4... brass cable gland for cable Ø 12 to 20,5 mm
 For control unit please see our Harmatex documentation

The ammeter is of the current transformer type, for use with a current transformer of 1 or 5 amp secondary (C.T. not supplied). Please state required ammeter motor scale and C.T. secondary current when ordering.

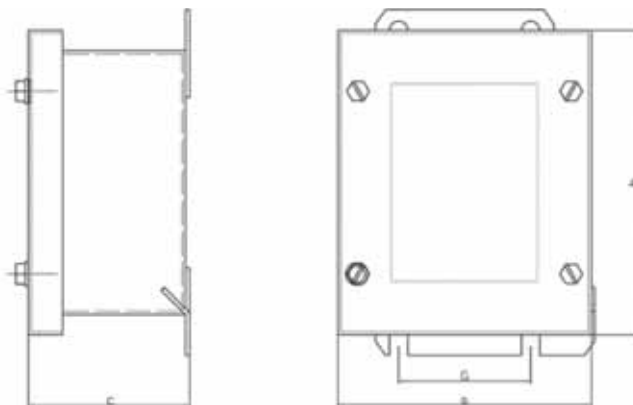
Note: For the insulated station the contact blocks are mounted in the base. For the metal stations, they are mounted on the cover.

Dimensions (mm)

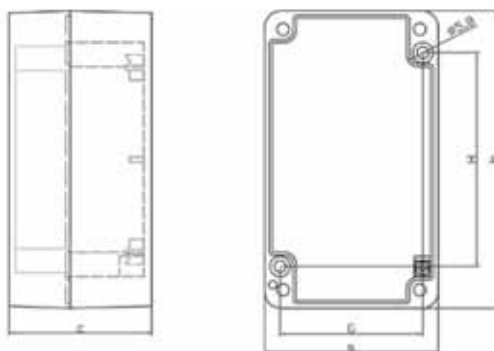


d : max 67 mm for operating head

Reference	a	b	c	G	H
XAWF1...	80	80	77	50	65
XAWF2...	80	130	77	50	115
XAWF3...	80	175	77	50	160
XAWF4...	80	220	77	50	205



Reference	a	b	c	G
XAWFS1...	125	90	75	75
XAWFS2...	125	130	75	75
XAWFS3...	125	175	75	75
XAWFS4...	125	220	75	75



Reference	a	b	c	G	H
XAWG1...	85	146	70	70	105
XAWG2...	85	146	70	70	105
XAWG3...	85	226	70	70	108