

RECIPROCATING HYDRAULIC SAW



ATEX (Explosive - Atmosphere)

AQUA Master

EGA Master offers a wide range of tools for underwater use among which you can find the hydraulic portable saw, ideal for underwater operations that require cutting pipe, tanks, steel structures, profiles and other materials.

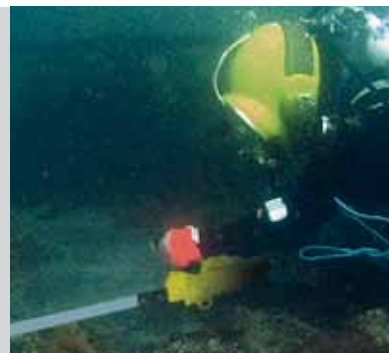
It can be used both in underwater environments and ATEX zones.

ATEX APPLICATIONS

It is suitable for the most difficult use in refineries, chemical plants, in the construction industry, in addition to the oil industry in the open sea, as well as in demolition works. It is ideal tool for cutting in confined spaces.

UNDERWATER APPLICATIONS

It is essential to the immersion work such as: vessels' maintenance and repair, floating appliances and submerged installations, demolition of underwater obstacles; breakwater dams, bridges, underwater construction, etc...



ZONES
1,2 GAS

*G12
12 Months
of warranty



Hydraulics

COD

79913

Designed for tube cutting up to 24 "outside diameter.

Accepts blades up to 37 "long.

TECHNICAL SPECIFICATIONS

Atex category	Ex II2GcT5
Working pressure	140 bar
Type	Hydraulic
Valve type	Twist ²
Stroke	60mm
Number of strokes	500 (1/min)
Power	2,8 Kw
Oil flow	15 l/min
Connection	12s
Hose (Øint)	12mm
Sound level	86 db
Vibration level	< 2,5 m/s ²
Weight	6,1 kg



OPERATING INSTRUCTIONS FOR UNDERWATER TOOLS:

BEFORE underwater operation:

- Test the machine for leakage
- Test all functions of the machine (drilling, blowing, all moving parts, valves)
- Spray all moving parts with lubricant OKS 8601 (or similar)

AFTER underwater operation:

- Clean the machine
- Dry the machine with compressed air
- Spray all moving parts with lubricant OKS 8601 (or similar)