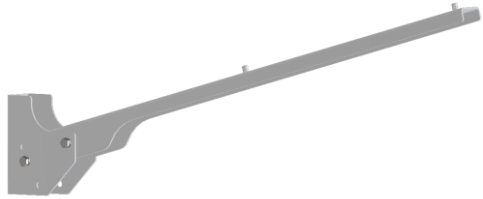


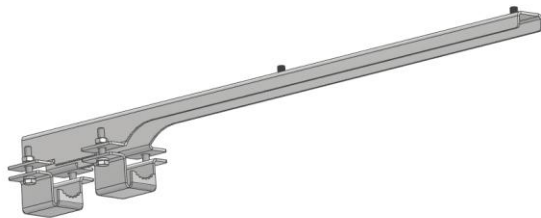
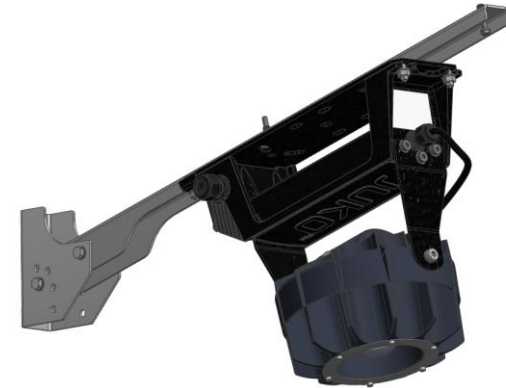
# JUKO LUX

**smarter light. better performance.**

INSTALLATION ACCESSORIES for  
HH / HT / HX



Wall Bracket (Adjustable 0°, 15°, 45°)  
for HT / HH / HX



Pipe Fixing Bracket HST  
for HT / HH / HX



		Compatible		
		HT	HH	HX
780212	PIPE INSTALLATION SET ASL 733 44 A4, 36-44mm, 6,5mm	•	•	•
790222	PIPE INSTALLATION SET ASL 733 44 F, 36-44mm, 6,5mm	•	•	•



PIPE INSTALLATION SET, 36-44mm, 6,5mm  
for HH / HT / HX luminaires.



		Compatible		
		HT	HH	HX
780217	LIFTING EYENUT INSTALLATION SET M10, A4	•	•	•
790317	LIFTING EYENUT INSTALLATION SET M10, Zn	•	•	•



Lifting Eyenut Installation Set  
for HH / HT / HX luminaires.



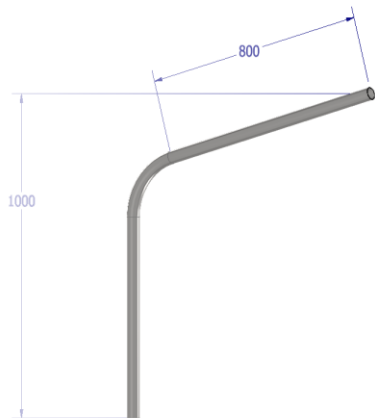


VP0080206 Structure is  
Stainless Steel 316L.

VP0090300 Structure is Hot-  
Dip Galvanized Steel.

JUKO luminaire post  
1000mm high, 250mm  
shoulder, 42.4 x 3.2

Installation examples.



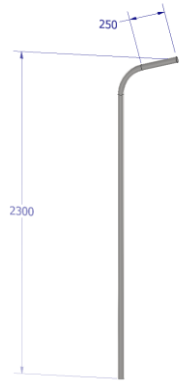
VP0080207 Structure is  
Stainless Steel 316L.

VP0090301 Structure is Hot-  
Dip Galvanized Steel.

JUKO luminaire post  
1000mm high, 800mm  
shoulder, 42.4 x 3.2

Installation examples.



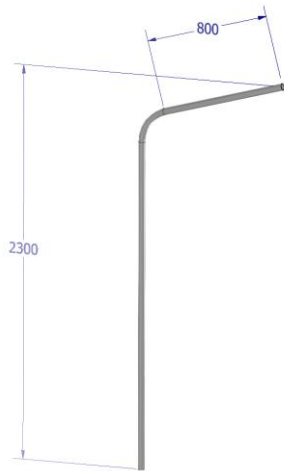


VP0080208 Structure is  
Stainless Steel 316L.

VP0090302 Structure is  
Hot-Dip Galvanized Steel.

JUKO luminaire post  
2300mm high, 250mm  
shoulder, 42.4 x 3.2

Installation examples.



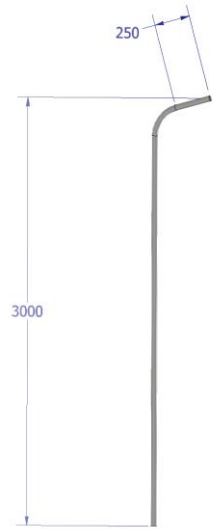
VP0080209 Structure is  
Stainless Steel 316L.

VP0090303 Structure is Hot-  
Dip Galvanized Steel.

JUKO luminaire post  
2300mm high, 800mm  
shoulder, 42.4 x 3.2

Installation examples.



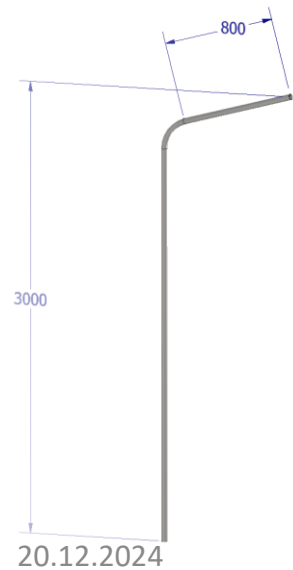


VP0080210 Structure is  
Stainless Steel 316L.

VP0090304 Structure is Hot-  
Dip Galvanized Steel.

JUKO luminaire post  
3000mm high, 250mm  
shoulder,  
42.4 x 3.2

Installation examples.



VP0080211 Structure is  
Stainless Steel 316L.

VP0090305 Structure is  
Hot-Dip Galvanized  
Steel.

JUKO luminaire post  
3000mm high, 800mm  
shoulder, 42.4 x 3.2

Installation examples.

