

# WELCOME TO THE #EFFICIENCYFAMILY



## LED Floodlight PM COLOSSUS 2-module

Professional LED Floodlight with large dissipation area of **standard 90°**

Construction made of sheet steel and internal body of high performance aluminium injection body with high performance coating, black color with a 4 mm tempered glass and IK08 impact resistant. Fireproof internal wiring up to 300 °C with high strength and flexibility.

Symmetric and asymmetric internal louvres specially designed to cover large surfaces, improve directional light flow and avoid glare. Adjustable bracket.

**FOR MARINE ENVIRONMENTS** optional with certified anti-saline coating available and doesn't affect the heat dissipation of the fixture.

LED Driver IP67, rectangular grey, adjustable 1-10V. Complete with IP68 Connector.

LED 3535 module [L90B10] with superior efficacy **up to >175 lm/w**

Estimated useful life superior to >100.000 hour.

5 years manufacturers warranty, (optional 10 year).

Available light colors 2700K, 4000K and 5000K (standard color 4000K) CRI >70

Voltage 95/270V 48/63Hz IP66 IK08

Power factor  $\geq 96\%$  ( $\cos \phi \geq 0,96$ ). Overvoltage protection 6KV.

**Breather valve** equals temperature inside and outside, reducing temperature and prevent condensation inside Ambient temperatures -40 °C - +60 °C.

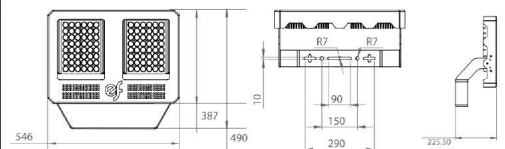
Total weight 14 kg.

Optional available with emergency battery, optional movement sensor, optional DALI protocol, RMS, CRI 80 and CRI 90, optics 10°, 30°, 60° symmetric

Developed and produced in EU



Article No.	Description	Wattage	Lumen output	LxWxH mm
83NTE1600	PM-COLOSSUS 42K	246/265	40.155	546 x 490 x 226
83NTE1601	PM-COLOSSUS 55K	320/344	52.476	546 x 490 x 226
83NTE1602	PM-COLOSSUS 70K	400/430	65.595	546 x 490 x 226
83NTE....P	Optional Anti Saline Coating	-	-	-



## LED Floodlight PM COLOSSUS 3-module

Professional LED Floodlight with large dissipation area of **standard 90°**

Construction made of sheet steel and internal body of high performance aluminium injection body with high performance coating, black color with a 4 mm tempered glass and IK08 impact resistant. Fireproof internal wiring up to 300 °C with high strength and flexibility.

Symmetric and asymmetric internal louvres specially designed to cover large surfaces, improve directional light flow and avoid glare. Adjustable bracket.

**FOR MARINE ENVIRONMENTS** optional with certified anti-saline coating available and doesn't affect the heat dissipation of the fixture.

LED Driver IP67, rectangular grey, adjustable 1-10V. Complete with IP68 Connector.

LED 3535 module [L90B10] with superior efficacy **up to >175 lm/w**

Estimated useful life superior to >100.000 hour.

5 years manufacturers warranty, (optional 10 year).

Available light colors 2700K, 4000K and 5000K (standard color 4000K) CRI >70

Voltage 95/270V 48/63Hz IP66 IK08

Power factor  $\geq 96\%$  ( $\cos \phi \geq 0,96$ ). Overvoltage protection 6KV.

**Breather valve** equals temperature inside and outside, reducing temperature and prevent condensation inside Ambient temperatures -40 °C - +60 °C.

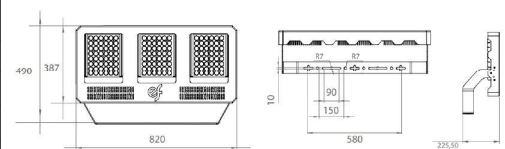
Total weight 25 kg.

Optional available with emergency battery, optional movement sensor, optional DALI protocol, RMS, CRI 80 and CRI 90, optics 10°, 30°, 60° symmetric

Developed and produced in EU



Article No.	Description	Wattage	Lumen output	LxWxH mm
83NTE1620	PM-COLOSSUS 84K	475/511	78.048	820 x 490 x 226
83NTE1621	PM-COLOSSUS 100K	565/608	93.705	820 x 490 x 226
83NTE1622	PM-COLOSSUS 120K	675/726	112.042	820 x 490 x 226
83NTE....P	Optional Anti Saline Coating	-	-	-



**LED Floodlight PM COLOSSUS 4-module**

Professional LED Floodlight with large dissipation area of **standard 90°**

Construction made of sheet steel and internal body of high performance aluminium injection body with high performance coating, black color with a 4 mm tempered glass and IK08 impact resistant. Fireproof internal wiring up to 300°C with high strength and flexibility.

Symmetric and asymmetric internal louvres specially designed to cover large surfaces, improve directional light flow and avoid glare. Adjustable bracket.

**FOR MARINE ENVIRONMENTS** optional with certified anti-saline coating available and doesn't affect the heat dissipation of the fixture.

LED Driver IP67, rectangular grey, adjustable 1-10V. Complete with IP68 Connector.

LED 3535 module [L90B10] with superior efficacy **up to >175 lm/w**

Estimated useful life superior to >100.000 hour.

5 years manufacturers warranty, (optional 10 year).

Available light colors 2700K, 4000K and 5000K (standard color 4000K) CRI >70

Voltage 95/270V 48/63Hz IP66 IK08

Power factor  $\geq 96\%$  ( $\cos \phi \geq 0,96$ ). Overvoltage protection 6KV.

**Breather valve** equals temperature inside and outside, reducing temperature and prevent condensation inside

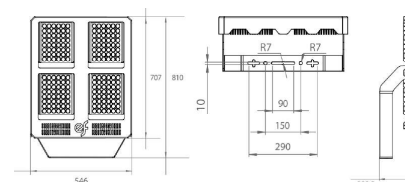
Ambient temperatures -40°C - +60°C.

Total weight 34 kg.

Optional available with emergency battery, optional movement sensor, optional DALI protocol, RMS, CRI 80 and CRI 90,

optics 10°, 30°, 60° symmetric

Developed and produced in EU



Article No.	Description	Wattage	Lumen output	LxWxH mm
83NTE1640	PM-COLOSSUS 140K	800/860	13.1191	546 x 810 x 299
83NTE1641	PM-COLOSSUS 160K	900/968	14.9390	546 x 810 x 299
83NTE....P	Optional Anti Saline Coating	-	-	-

## Data Link MLFL LED MARINE Floodlight IP66 IK10

**LED Floodlight Data Link MLFL**

Drydock reflector to meet the highest requirements for safety, endurance and quality of work lighting.

Produced in according with the CENELEC norm HD63751 which ensures the highest worker safety and working efficiency.

Has no breakable glass components, resistant to dust and high pressure jets and has mechanical protections IP66 and IK10. Additionally the reflector is equipped with a replaceable, transparent protective foil that further protects the lamp from external influences. This protective foil is peelable and easy to replace.

Available with several lens optics 30°, 60°, 90° and 120°.

Nominal voltage is standard 110/230V 50/60Hz.

Power factor  $\geq 95\%$  ( $\cos \phi \geq 0,95$ ).

Total harmonic distortion <20%

Operating temperatures -40°C to +50°C

Lumen efficacy of **145 lm/w**

Standard color 4500K optional 5500K.

Standard light angle 120°.

Standard protection IK10, OVP (over voltage protection), OTP (over temperature protection).

Housing aluminium alloy, powder coated or cataforesis (salt water resistance coating).

Optional available 42Vac.

CRI 80-85.

Weight 8 kg (excl. trolley).

Trolley made of stainless steel.



Article No.	Description	Wattage	Lumen output	DxH mm
580202	Marine LED Floodlight MLFL150	150	22.000	D380 x H114
580200	MLFL150 incl. Trolley	150	22.000	D380 x H114
580210	Spare Trolley for MLFL150	-	-	-
580211	Scaffold mounting bracket	-	-	-
580216	Ceiling/wall mounting bracket	-	-	-
580220	Peelable protective foil PET	-	-	-

