

The risk?



How to be prepared



Collisions with ice in the polar regions may lead to hull puncture and water ingress. For this reason Miko Marine AS has developed the Miko Plaster Polar Kit.

Based on earlier experience, and in compliance with the Polar Code requirements of being more independent of help from outside, Miko Marine with the operational guidance of Capt. Benny Didriksen, has developed a kit to potentially keep your vessel afloat and prevent it from sinking. The kit consists of the well known patented and DNV-GL qualified Magnetic Patches, Miko Plaster® and adequate flexible handling- and installation tools enabling sub-sea installation without divers or ROV's.

* In compliance with the Polar Code Emergency response requirements (chapter 2).

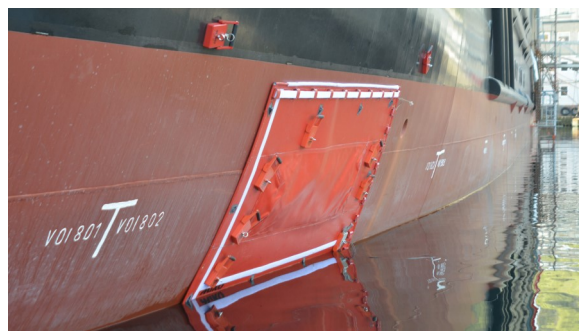
INSTALLATION PRINCIPLE

The Miko Polar Kit is a versatile tool which can be used for many different applications. The operating instructions provide a typical step-by-step installation guide. Additions and/or deviations may be required for individual cases.

1. Mount the rail onto the hull of vessel with magnets, adjust height with a rubber hammer
2. Connect lifting tackle with ropes to the rail
3. Connect drum to lifting tackle, make sure that the row of MPM magnets are facing away from hull.
4. Hoist drum to max height against rail, fasten pullout rope to bottom attachment point on drum, lower the drum vertically to suited height for plaster to cover the damage
5. Turn the drum until the vertical row of MPMs click onto the hull, and the plaster is secured
6. Start the application of the plaster by turning the drum and pulling the pullout rope, adjust height of the drum if necessary
7. Inspect underwater during the horizontal application of the plaster, use the T-tool on the telescopic pole smoothing the plaster onto the hull as required
8. Roll the plaster drum until the plaster is rolled out in full length and fastened to the hull.
9. Inspect the plaster, use the T-tool to smoothen out any pockets of air or water between plaster and hull
10. Secure the plaster using extra MAM-003 magnets



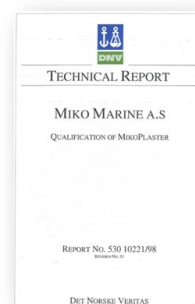
Installation of Polar Plaster



Polar Plaster installed on shipside

Contents of the kit

1 pcs	1 500 x 3 000 mm Miko Polar Plaster
1 pcs	900 x 1250 mm Magnetic Miko Plaster®
20 pcs	MAM-003 Miko Anchor Magnets
20 pcs	MPM-001CS Miko Permanent Magnets
1 pcs	Installation/Storage Drum with Extension Rods
2 pcs	Telescopic handling poles for handling magnets, plaster and camera.
1 pcs	Guide Rail for horizontal installation
1 pcs	Underwater Camera and Video Monitor in Peli Case
1 pcs	Batyscope, analog underwater scope for manual location/inspection
1 pcs	Misc. Handling Ropes, Block and Tackle and Tools
1 pcs	Installation, - user and maintenance Manual
1 pcs	DNV-GL Technical Report No. 530 10221/98 <i>Qualification of Miko Plaster</i>



CONTACT

Miko Marine AS
Vollsveien 4
N-1366 Lysaker
Norway

Website: www.mikomarine.com
E-mail: info@mikomarine.com
Telephone: +47 46 90 50 00