

Eye Bolts and Toggle Nuts

Eye Bolts or Dog Bolts DIN 444B

Eye Bolts according to DIN 444B in massive brass mainly used in seawater conditions for hatches.

Wing Nuts or Toggle Nuts DIN 80701

Toggle Nuts according to DIN 80701 in massive brass mainly used in seawater conditions for hatches.

Bow Nuts DIN 80704

Bow Nuts according to DIN 80704 in massive brass mainly used in seawater conditions for hatches.



Article No.	DIN	Dimension	Eye In.	Packed	IMPA
06444B10080	444B	M10x80	8 mm	10	69 24 01
06444B10100	444B	M10x100	8 mm	10	69 24 01
06444B10120	444B	M10x120	8 mm	10	69 24 01
06444B12080	444B	M12x80	10 mm	10	69 24 01
06444B12100	444B	M12x100	10 mm	10	69 24 01
06444B12120	444B	M12x120	10 mm	10	69 24 01
06444B16100	444B	M16x100	14 mm	10	69 24 01
06444B16120	444B	M16x120	14 mm	10	69 24 01
06444B16160	444B	M16x160	14 mm	10	69 24 01
06444B20140	444B	M20x140	16 mm	10	69 24 01
06444B20200	444B	M20x200	16 mm	10	69 24 01
06444B24180	444B	M24x180	20 mm	10	69 24 01

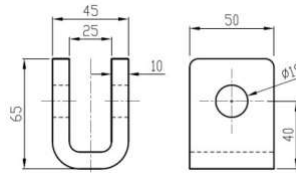
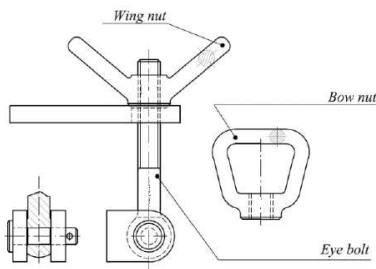
Article No.	DIN	Dimension	Packed	IMPA
068070110	80701	M10	10	69 24 01
068070112	80701	M12	10	69 24 01
068070116	80701	M16	10	69 24 01
068070120	80701	M20	10	69 24 01
068070124	80701	M24	10	69 24 01

Article No.	DIN	Dimension	Packed	IMPA
068070410	80704	M10	10	69 24 01
068070412	80704	M12	10	69 24 01
068070416	80704	M16	10	69 24 01
068070420	80704	M20	10	69 24 01
068070424	807014	M24	10	69 24 01



Stainless Steel AISI 316

All three products are on request also available in seawater resistant stainless steel AISI-316



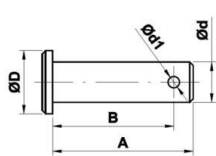
U-Brackets

U-Brackets for dog bolts can be ordered in:

Carbon Steel St-52 primed

Stainless Steel AISI-316L

Manufactured according to Norsk Standard NS 2582

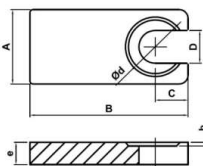


Dog Bolt Pins

Cylindrical pins with stopper at one side and hole for split pin (Din 94) at the other side.

The cylindrical pins are made from Stainless Steel AISI-316.

Other possibility is to use a Hexagon Bolt Din 931 + Washer Din 125 + Prevailing torque hexagon Nut with nylon insert Din 985

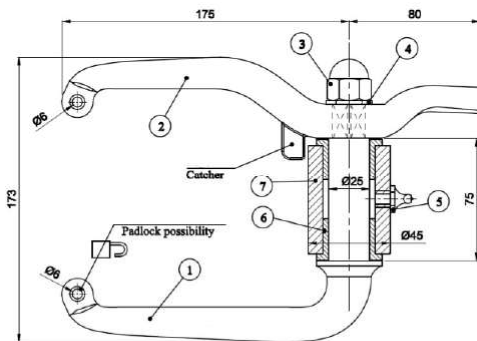


Supports or Pressure Forks

Pressure Forks are made from Stainless Steel AISI-316L, Carbon Steel St-52 and Aluminium.

Manufactured according to Norsk Standard NS 2582

Comes in standard dimensions but can also be made according to the requirements of the customer.



Hatch and Door Handles

We can offer a variety of Hatch and Door Handles for marine applications.

Possibility in one-handle or two-handle configurations.

Materials are Stainless Steel AISI-316 and Zinc Coated Carbon Steel C-45.

The dimensions are according to DIN 83104. The bearing support that is welded to the hatch or the door is manufactured in Stainless Steel AISI-316L, Carbon Steel or in Aluminium that allows welding. All the handles are provided with two self-lubricating bronze bearings and a stainless steel straight ball greasing nipple.

For Watertight Doors and Marine Deck Hatches.

For Doors of wind generators in wind parks.

For Watertight cubicles doors.

Hatch and Door Handles for GFRP and Wooden Doors

To adapt handles in GFRP (Glass Fibre Reinforced Polymer) or wooden doors we can supply special sets of door and hatch handles.

Extra Information

Other dimensions and possibilities on request available. Contact our product specialists for more information.