

Gifas LaneLED Inox Handrail system

Gifas LaneLED INOX Handrail system

MORE THAN JUST A SIDE APPEARANCE.

GIFAS handrail and light strip systems ensure efficient LED lighting and make your object a visual eye-catcher. Greater visibility and peace of mind for pedestrians on public roads are just some of the benefits of our GIFAS wall, ceiling and handrail lighting.

LED-equipped handrails for outdoor and indoor applications (balcony handrails, stairway handrails and terrace handrails) which can very easily be assembled on classic handrail posts using special pipe sections. The pipe brackets and adapters allow an inner cable guide with the GIFAS developed connection cabling. The large number of individual elements of the modular system enables the needs-based provision for many different installation locations (wall, railings, etc.). All metal components are V4A-quality, with a protection class of IP67. Up to 50 meter length on one power supply. Optionally dimmable. Vandalism Proof.

Handrail LaneLED INOX42

The GIFAS handrail profile is the carrier element for the LaneLED INOX42. The profile and the various fastening and connecting items are designed and coordinated in a way that ensures the electric supply with the cable.

Mechanical properties

Metal components	Stainless steel V4A
Outer diameter	42.4mm
Profile wall thickness	1.5mm
Profile surface	Radial grinding (Korn 240)
Profile length	2500mm / 5000mm
Types of installation	Pipe connection plate / Wall bracket / Handrail pole

The LaneLED light bar from GIFAS is the basic element for the illuminated handrail. The other parameters of the LaneLED are carefully determined.

Input voltage	21-32VDC
Light bar	Type II (190mm / 560mm / 928mm / 1482mm)
Light colour	3000K/4400K/5800K
Beam angle	120°
Protection category	IP69K
Protection	class III
Shock resistance	IK10
Operating life	50000h [L70/B10]
System cable	2x2.5mm ² black (Internal flat cable CU-tinned with copper, EPR/EPR)
Cover	clear / frosted (L 1600mm)
Mounting type	Standard 30° offset

Structure of LaneLED

The carrier profile of the LaneLED light bar consists of a special profile made of plastic with special mechanical and chemical properties. A flexible and divisible LED strip is inserted from below and worked into the plastic profile with a 2K potting compound. The potting leads to the high degree of protection of IP69K. In the upper part of the profile (between the cross struts) there is space for the cable routing including the current connector. The internal system cable is therefore well protected against vandalism.

Current collector

For the electrical supply, each individual LaneLED is connected via the current collector - freely attachable to the 2x2.5 mm² flat cable. The cable socket on the pantograph or the connecting cable with plug of the LaneLED (IP69K connection) serves as an interface.

Installation instruction:

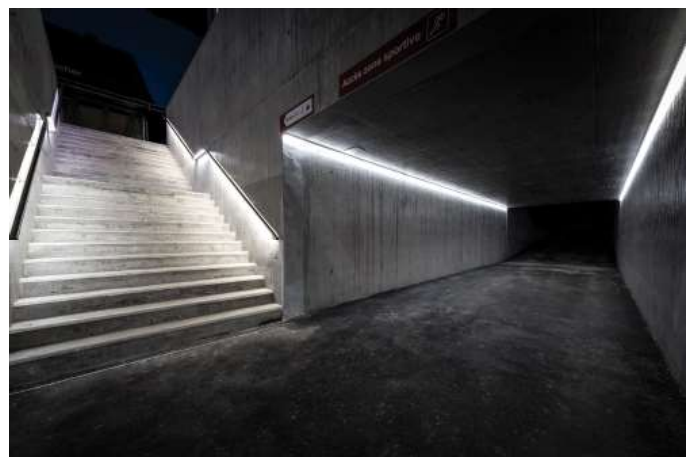
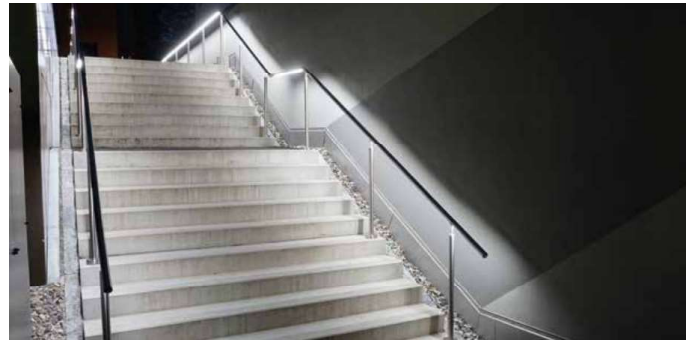
The current collectors are to be installed with a special tool. The mechanical pressing tongs can be provided on request on loan.

Redundant version with two independent lighting circuits on request!

Technical data

Input voltage	12-30VDC or via mains unit 230VAC, 24VDC (also available in 24VAC on request)
Power supply	24VDC 500mA, 12VDC 950mA
Light source	5x3W PowerLEDs
Light colour	3000K, 4400K, 5800K
Beam angle	Spot 10°, Medium 38°
Protection category	IP54 (without connector power supply)
Protection	Class III
Temperature operating range	-25°C to +45°C
Surface temperature	max. 55°C
Housing	Aluminium die casting, black coated
Weight	500g
Dimensions (WxHxD)	108x67x82mm (light)

GIFAS
ELECTRIC



Contact our RMN product specialist for your project.

Our Gifas product specialist can assist you with offering the needed LaneLED INOX hand-rail components.

We will assist you to make your project successful. If it is a new project which is only on drawing or an existing situation where we must go together to the location, together we will fulfill your needs in safe and aesthetic light solutions for public areas such as walkways, train stations, shopping areas, stairways, sports stadiums etc.