

## Measuring Tools Marking calipers and gauges MIB Germany

### MIB Marking vernier caliper with roll and carbide point

Made of stainless steel, chrome finished. Reading 0.05 mm, 1/20 mm + 1/28". With exchangeable carbide point.

Article No.	Range in mm	Nonius mm/inch	IMPA
337020	200 mm	1/20 = 0.05 mm + 1/28"	-
337021	400 mm	1/10 = 0.10 mm + 1/28"	-
337022	Spare point	-	-



### MIB Steel Marking Gauge with round plate

With round plate Ø 55 mm, steel point and hardened. Reading 1/10 = 0.1 mm in case. With exchangeable point.

Article No.	Range in mm	Nonius mm/inch	IMPA
337035	200 mm	1/10 = 0.10 mm	-
337036	400 mm	1/10 = 0.10 mm	-
337037	Spare point	-	-



## Measuring Tools Squares MIB Germany

### MIB Simple squares, zinc plated

Available flat or with back. Made of carbon steel and zinc plated. According to works standard.

Article No. FLAT	Size in mm	IMPA	Article No. WITH BACK	Size in mm	IMPA
000330	100 x 70	65 09 38	000330B	100 x 70	-
000331	150 x 100	65 09 40	000331B	150 x 100	-
000332	200 x 130	65 09 41	000332B	200 x 130	-
000333	250 x 160	65 09 42	000333B	250 x 160	-
000334	300 x 180	65 09 43	000334B	300 x 180	-
000335	400 x 230	65 09 44	000335B	400 x 230	-
000336	500 x 280	65 09 45	000336B	500 x 280	-
000337	600 x 330	65 09 46	000337B	600 x 330	-
000338	750 x 375	65 09 47	000338B	750 x 375	-
000339	1000 x 500	65 09 48	000339B	1000 x 500	-



### MIB Control squares, zinc plated DIN 875 Grade 2

Available flat or with back. For marking and testing. Made of carbon steel and zinc plated. DIN 875 Grade 2, 90° square.

Article No. FLAT	Size in mm	IMPA	Article No. WITH BACK	Size in mm	IMPA
000330NF	100 x 70	65 09 53	000330BNF	100 x 70	-
000331NF	150 x 100	65 09 55	000331BNF	150 x 100	-
000332NF	200 x 130	65 09 56	000332BNF	200 x 130	-
000333NF	250 x 165	65 09 57	000333BNF	250 x 165	-
000334NF	300 x 175	65 09 58	000334BNF	300 x 175	-
000335NF	400 x 200	65 09 59	000335BNF	400 x 200	-
000336NF	500 x 250	65 09 60	000336BNF	500 x 250	-
000337NF	600 x 300	65 09 61	000337BNF	600 x 300	-
000338NF	750 x 375	65 09 62	000338BNF	750 x 375	-
000339NF	1000 x 500	65 09 63	000339BNF	1000 x 500	-



### MIB Precision Control squares, stainless steel DIN 875 Grade 0

Available flat or with back. Made of stainless steel, engraved size and DIN. DIN 875 Grade 0, 90° square.

Article No. FLAT	Size in mm	IMPA	Article No. WITH BACK	Size in mm	IMPA
000329S	75 x 50	-	000329BS	75 x 50	-
000330S	100 x 70	-	000330BS	100 x 70	-
000331S	150 x 100	-	000331BS	150 x 100	-
000332S	200 x 130	-	000332BS	200 x 130	-
000333S	250 x 165	-	000333BS	250 x 165	-
000334S	300 x 200	-	000334BS	300 x 200	-



### MIB Back squares with heavy base and thin blade

Made of carbon steel and hardened. According to works standard.

Article No.	Size in mm	IMPA	Article No.	Size in mm	IMPA
000350	100 x 75	65 09 68	000353	250 x 160	65 09 72
000350A	125 x 75	65 09 69	000354	300 x 175	65 09 73
000351	150 x 100	65 09 70	000355	400 x 200	65 09 74
000352	200 x 125	65 09 71	000356	500 x 250	65 09 75

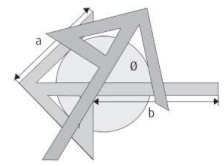


## Measuring Tools Precision Center square MIB Germany

### MIB Precision Center Square

Satin chrome finished, with mm graduation.  
Tolerance 0.3 mm. For scribing the center round parts and waves,

Article No.	Range (b x a) in mm	for Shaft $\phi$ mm	IMPA
000501	100 x 70	90	-
000502	150 x 130	190	-
000503	200 x 150	220	-
000504	250 x 160	230	-
000505	300 x 180	280	-
000506	400 x 240	400	-
000507	500 x 300	520	-

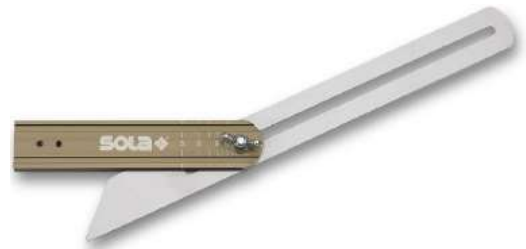


## Measuring Tools Adjustable sliding bevel Sola Austria

### Sola Adjustable sliding bevel series VSTG

Rugged aluminium handle with a wide working face. Robust spring-steel polished blade.  
Variably adjustable, fixable angular dimensions.  
Scale for the readout and transfer of the set angles.  
Graduations in degree, 2-piece engraved.  
Angular dimensions: variable, 45°, 60°, 90°, 120°.

Article No.	Length in mm	Type	IMPA
000340	200	VSTG 200	-
000341	250	VSTG 250	-
000342	300	VSTG 300	-



## Measuring Tools Rules MIB Germany

### MIB Steel Rules without graduation and with bevelled edge

Steel rules made of mild steel, zinc plated, with bevelled edges. **Without graduation.** Factory standard.

Article No.	Size L x W in mm	Thickness mm	IMPA
000378	600 x 40	5	65 09 06
000379	800 x 40	5	65 09 07
000380	1000 x 40	5	65 09 09
000381	1500 x 40	5	65 09 10
000382	2000 x 40	5	65 09 11
000383	3000 x 50	8	-

### MIB Steel Rules with graduation and with bevelled edge

Steel rules made of mild steel, zinc plated, with bevelled edges. **With mm graduation.** Factory standard.

Article No. With Graduation	Size L x W in mm	Thickness mm	IMPA
000378MM	600 x 40	5	65 09 21
000379MM	800 x 40	5	65 09 22
000380MM	1000 x 40	5	65 09 24
000381MM	1500 x 40	5	65 09 25
000382MM	2000 x 40	5	65 09 26
000383MM	3000 x 50	8	-

Length 1500, 2000, 3000 are charged with extra transport cost due to oversize



### MIB Aluminium Rules with graduation and with bevelled edge

With bevelled edge + mm graduation, aluminium alloy. Light and corrosion resistant.  
Glare-free reading. Dark scale.

Article No.	Size L x W in mm	Thickness mm	IMPA
337050	300 x 50	5	-
337051	600 x 50	5	-

Article No.	Size L x W in mm	Thickness mm	IMPA
337052	1000 x 50	5	-



### MIB Stainless Steel Rules with graduation

Reading from left to right. Spring stainless steel, one side graduation etched. Works standard.

#### Type C= Width 18 mm

mm/inch; top 1/64, 1/32 and 1/16 graduation, bottom 1/2 mm and 1/1 mm graduation.

#### Type D= Width 30 mm

mm/inch; top 1/2 and 1/1 mm graduation, bottom 1/64, 1/32 and 1/16 graduation.

Article No.	Size L x W in mm	Thickness mm	Type	IMPA
337100	150 x 18	0.5	C	-
337101	300 x 18	0.5	C	-
337102	300 x 30	1.0	D	-
337103	500 x 18	0.5	C	-

Article No.	Size L x W in mm	Thickness mm	Type	IMPA
337104	500 x 30	1.0	D	-
337105	1000 x 18	0.5	C	-
337106	1000 x 30	1.0	D	-
337107	2000 x 30	1.0	D	-

Type C



Type D



Type C



Type D

### MIB Stainless Steel Rules with graduation and with hook 90°, EG class II

Reading from left to right. Spring stainless steel, no glare, matt surface, etched graduation.  
Graduation front top and bottom 1 mm, back top and bottom 1/2 mm.

Article No.	Size L x W in mm	Thickness mm	IMPA
337060	200 x 13	0.5	-
337061	300 x 13	0.5	-

Article No.	Size L x W in mm	Thickness mm	IMPA
337062	500 x 18	0.5	-



Front side 1 mm graduation



Back side 1/2 mm graduation