

# Miko Marine ROV Magnet



### Miko Marine Norway Switchable ROV Magnet

The switchable Miko ROV magnet has a fully mechanical on/off function and a holding force of 750 kg\* when activated.

By virtue of the modular design, the magnet can be tailored to any application. The handles can be replaced to fit all common types of ROV manipulator claws, while the bracket can be replaced by for example a camera or a torch.

The magnet is deactivated by pushing the handles together – and activated when the ROV releases its grip. This allows for the gentle handling of painted subsea installations, fragile wrecks and other underwater steel structures. The stainless steel housing, combined with a high quality pressure compensator, provides corrosion resistance and full ocean depth rating.

The Miko Switchable ROV Magnet is tested to pick-up objects up to a weight of 750 kg.

### Typical areas of usage are:

- \* Stabilizing ROVs (welding inspections etc.).
- \* Temporary storage of ROV tools.
- \* Fixing points for lights and/or cameras.
- \* Pick up objects
- \* Hang off tooling

The magnet is shipped in a package suitable for air freight. Send enquiry for more information.

### Mechanical properties:

Holding force: 750 kg  
Footprint: 200 x 312 mm  
Weight in air: 24 kg  
Weight in water: 19 kg  
Box quantity: 1 pcs  
Depth rating: Full ocean depth  
Air Freight: Unrestricted

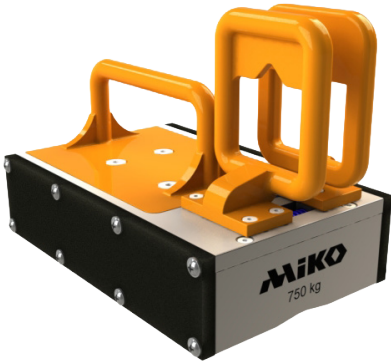
\* perpendicular holding force on a clean mild steel plate of minimum thickness 30 mm.

### Shipping and storage:

Always ship in the supplied steel box, clean with tap water after use and let it dry completely before storage.

For a single job there is also the possibility to rent a Miko Switchable Magnet. Contact our Miko specialists for more information.

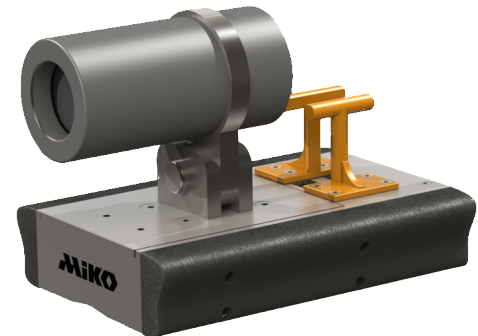
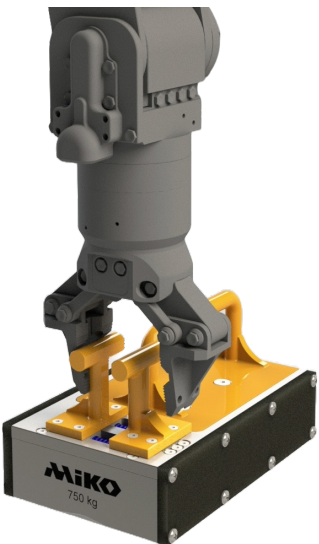
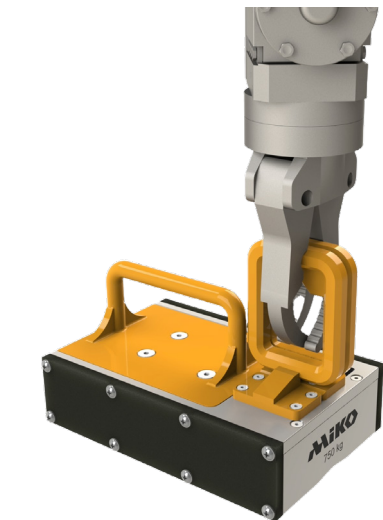
Article No.	Description
75MIK10500	Miko Switchable ROV Magnet 750 kg holding force



Available with **D-Grip** or **T-Bar** to use with different types of ROV manipulator claws



Available with **D-Grip** or **T-Bar** to use with different types of ROV manipulator claws



### Easily handling:

With the ROV manipulator claws the Miko ROV Magnet can be easily placed and released from the surface.

### Versatile base:

With its versatile base, multiple tools can be mounted on the Miko ROV Magnet. This makes the magnet the ultimate tool for multiple ROV operations.