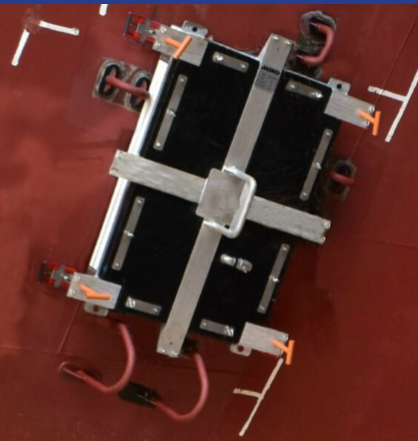


Miko Marine Sea Chest Cover



CD/BH

BH/FOD



Miko Marine Norway Miko Sea Chest Cover

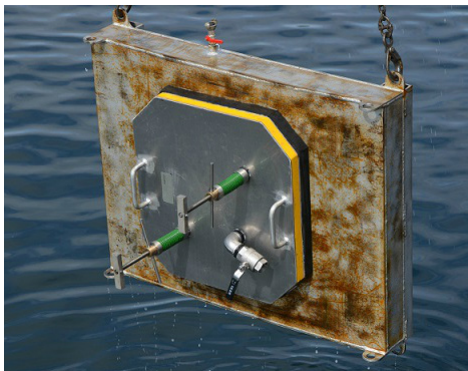
Miko Marine designs and delivers Sea Chest Covers for any vessel, in any size and at any operating depth. Hull curvature, sea chest grid arrangement and other data are taken into account for the design.

The threaded rods are equipped with hooks at the bottom end that lock onto the sea chest grid and keep the cover firmly in place. By tightening the wing nuts, the rubber gasket is compressed slightly and an initial watertight seal against the hull is attained.

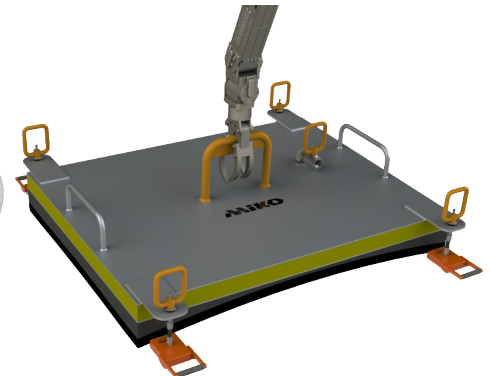
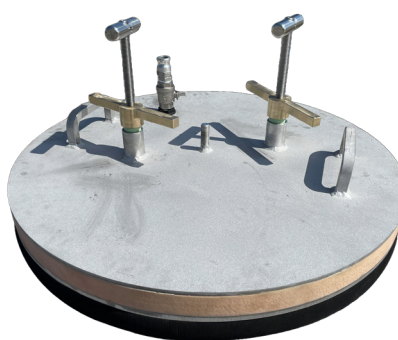
When water has been pumped out from the inside of sea chest, the rubber gasket will be compressed further due to the pressure difference is acting on the sea chest cover. The springs under the wing nuts maintain a constant tension in the rods as this happens, by compensating for the movement of the cover. This means that the divers do not need to go back and re-tighten the wing nuts after emptying the sea chest.

Miko's Sea Chest Covers will keep the sea chest dry throughout the entire operation after the complete seal is attained. The sea chest cover provides a first barrier for sea chest. **Miko recommends to use cover as first barrier and cofferdam as second barrier for secure sealing (see below pictures).**

Send enquiry for detailed information and quotation.

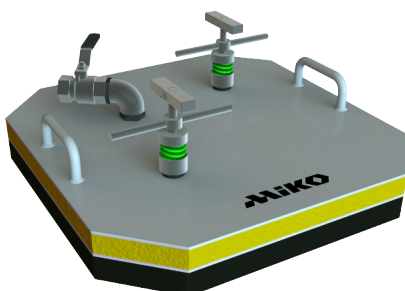
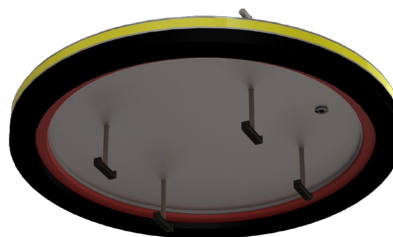


Sea chest cover (Test situation)

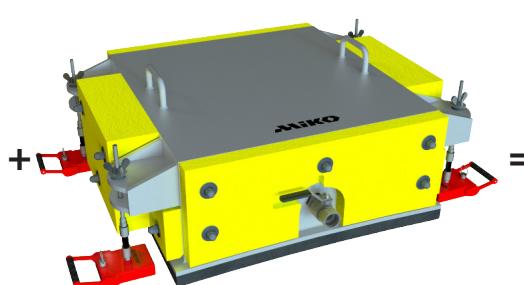


Any Shape and size.

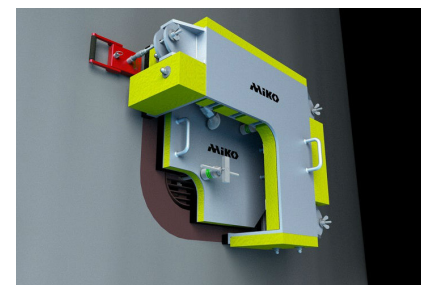
Possibility for ROV friendly design.



Sea chest cover (First Barrier)



Sea chest cofferdam (Second Barrier)



Double barrier sealing