

Miko Marine Yacht Salvage Kit



Miko Marine Norway Miko Yacht Salvage Kit

Miko Marine AS has developed the Yacht Salvage Kit in association with Captain Nick Sloane, salvage master and member of the Lloyds Panel of Special Casualty Representatives.

Collisions, groundings, explosions and valve failures all have the potential of uncontrolled water ingress. Deploying the Yacht Salvage Kit in such a situation, the right patch is selected from the kit and rapidly deployed over the damaged area. Particularly intended for use on super yachts and smaller vessels, the kit contains Miko Marine's well proven Miko plaster technology for keeping water on the outside and oil on the inside.

The kit contains three FlexiShape Miko patches of different sizes, used for larger damages following groundings or collisions on all hull types.

The FlexiShape Miko Plaster is lowered into the water and positioned over the damaged area by divers.

The Miko Fix is applied to fix the Miko bolts through the Aluminium Bars and secure the patch in place.

Also included in the kit, is the Miko Fix®. This is a compact and cordless underwater fastening system which is used for to fasten and secure the patches to the hull.

The Magnetic Miko Plaster® is used for leaks, cracks, sealing off pipe inlets, sea chest cover etc.

With a weight in water of 6,2 kg, the Miko Plaster® can be easily handled by one diver. The patch is applied directly over the leak and can be simply re-positioned if necessary.

The seal is achieved by the water pressure and magnetic adhesion between the patch and the steel surface.

The MPM-002 Miko Permanent Magnets are placed on top of the patch to increase the seal and resistance to peeling that might be caused by towing or current speed.

The content is well protected in three IP 54 rated plastic containers, each with a weight of approximately 64 kg.

Installation Principle:

The FlexiShape Miko Plaster is lowered into the water and positioned over the damaged area by divers.

The MPM-002 Miko Permanent Magnets are used to hold it in position.

The MikoFix Underwater Drill System is used to screw the selftapping bolts through the Aluminium Bars to secure the patch in place.

Once the patch is secure and covers all of the damaged area, the water or oil can be pumped out from the inside.

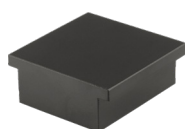
The FlexiShape Miko Plaster® is reinforced with several layers of Kevlar similar to bullet proof vests to protect it from puncturing.

If used correctly it will follow the curvature of the hull without being damaged and will enable the vessel to be re-floated and towed to safety.

Shipping and storage:

The kit is shipped in three transport / storage boxes measuring 2 pieces 130x70x68 cm and 1 piece 79x53x45 cm with total gross weight of 192 kg.

Article No.	Description
75MIK55010	Miko Marine Yacht Salvage Kit



Miko Marine Yacht Salvage Kit

Miko Yacht Salvage Kit Case 1 Contents:

1 pcs FlexiShape Miko Plaster 1,00 x 3,00 m
12 pcs Aluminium profiles 1150 x 50 x 6 mm
1 pcs Watertight storage and transport case

Dimensions case 130x70x68 cm
Weight case 63 kg

Miko Yacht Salvage Kit Case 2 Contents:

1 pcs FlexiShape Miko Plaster 2,00 x 2,00 m
1 pcs Miko Magnetic Plaster 0,9 x 1,25 m
12 pcs Aluminium profiles 1150 x 50 x 6 mm
1 pcs Watertight storage and transport case

Dimensions case 130x70x68 cm
Weight case 64 kg

Miko Yacht Salvage Kit Case 3 Contents:

1 pcs Miko Fix
100 pcs Self Tapping Bolts 16 mm for Miko Fix
100 pcs Self Tapping Bolts 22 mm for Miko Fix
4 pcs Miko Anchor Magnet MAM-001
10 pcs Miko Permanent Magnet MPM-002
2 pcs Miko Handling tool (MHT-002) for MPM-002
8 pcs Handling ropes MHT-001
1 pcs User Manual

Dimensions case 79x53x45 cm
Weight case 65 kg



rmn

MiKO
MARINE

