

Palletboxes

Palletbox with hinged lid made of HDPE

Plastic palletbox, liquid tight, on three runners and with hinged lid. Material Heavy Duty Polyethylene (HDPE). Foodgrade. Available in several colors. Temperatuur resistance -30°C to +70°C. The lid is equipped with a flip lock. There is a 1" and 2" outlet on both short and long side. Screw taps are separate available. The box has convex, outward-facing wall panels for optimal container volume. This allows for up to 10% volume gain compared to conventional pallet boxes. Can be used for multiple applications. Easy stackable with a max. static stacking load of 4.500 kg and a max. dynamic stacking load of 1.000 kg.



Article No.	Color box / Color Lid	Size out mm lwxh	Size in mm lwxh	Weight	Capacity	Load capacity
951050	Grey / Grey	1200x1000x830mm	1110x910x610mm	53 kg	670 ltr	500 kg
951050R	Red / Grey	1200x1000x830mm	1110x910x610mm	53 kg	670 ltr	500 kg
951050B	Blue / Grey	1200x1000x830mm	1110x910x610mm	53 kg	670 ltr	500 kg
951050Y	Yellow / Grey	1200x1000x830mm	1110x910x610mm	53 kg	670 ltr	500 kg
951050G	Green / Grey	1200x1000x830mm	1110x910x610mm	53 kg	670 ltr	500 kg
951050O	Orange / Grey	1200x1000x830mm	1110x910x610mm	53 kg	670 ltr	500 kg



Palletbox with hinged lid, 2x toggle clasps and stainless steel padlock eye bolts made of HDPE

Plastic palletbox, liquid tight, on three runners and with hinged lid. Material Heavy Duty Polyethylene (HDPE). Foodgrade. Available in several colors. Temperatuur resistance -30°C to +70°C. The lid is equipped with a flip lock. There is a 1" and 2" outlet on both short and long side. Screw taps are separate available. The box has convex, outward-facing wall panels for optimal container volume. This allows for up to 10% volume gain compared to conventional pallet boxes. Can be used for multiple applications. Easy stackable with a max. static stacking load of 4.500 kg and a max. dynamic stacking load of 1.000 kg.

The boxes have as extra 2 pcs toggle clasps to secure the lid and stainless steel padlock eye bolts for extra security.

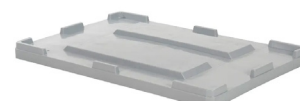
Article No.	Color box / Color Lid	Size out mm lwxh	Size in mm lwxh	Weight	Capacity	Load capacity
9510503S	Grey / Grey	1200x1000x830mm	1110x910x610mm	53 kg	670 ltr	500 kg
951050R3S	Red / Grey	1200x1000x830mm	1110x910x610mm	53 kg	670 ltr	500 kg
951050B3S	Blue / Grey	1200x1000x830mm	1110x910x610mm	53 kg	670 ltr	500 kg
951050Y3S	Yellow / Grey	1200x1000x830mm	1110x910x610mm	53 kg	670 ltr	500 kg
951050G3S	Green / Grey	1200x1000x830mm	1110x910x610mm	53 kg	670 ltr	500 kg
951050O3S	Orange / Grey	1200x1000x830mm	1110x910x610mm	53 kg	670 ltr	500 kg



Palletbox made of HDPE

Plastic palletbox, liquid tight, on three runners. Material Heavy Duty Polyethylene (HDPE). Foodgrade. Available in several colors. Temperatuur resistance -30°C to +70°C. There is a 1" and 2" outlet on both short and long side. Screw taps are separate available. The box has convex, outward-facing wall panels for optimal container volume. This allows for up to 10% volume gain compared to conventional pallet boxes. Can be used for multiple applications. Easy stackable with a max. static stacking load of 4.500 kg and a max. dynamic stacking load of 1.000 kg.

Article No.	Color box	Size out mm lwxh	Size in mm lwxh	Weight	Capacity	Load capacity
951060	Grey	1200x800x790mm	1110x710x610mm	38 kg	535 ltr	500 kg
951060B	Grey	1200x1000x790mm	1110x910x610mm	45,5 kg	670 ltr	500 kg
951060R	Red	1200x800x790mm	1110x710x610mm	38 kg	535 ltr	500 kg
951060D	Lay-on-lid Grey	1212x812x80mm	-	6,5 kg	-	-
951060E	Lay-on-lid Grey	1212x1012x80mm	-	7,8 kg	-	-



Palletbox on Castor Wheels made of HDPE

Plastic palletbox, liquid tight, on castor wheels easy to move around. Material Heavy Duty Polyethylene (HDPE). Foodgrade. Available in several colors. Temperatuur resistance -30°C to +70°C. There is a 1" and 2" outlet on both short and long side. Screw taps are separate available. The box has convex, outward-facing wall panels for optimal container volume. This allows for up to 10% volume gain compared to conventional pallet boxes. Can be used for multiple applications.

Article No.	Color box	Size out mm lwxh	Size in mm lwxh	Weight	Capacity	Load capacity
951070	Grey	1200x800x915mm	1110x710x610mm	40 kg	535 ltr	500 kg
951070R	Grey	1200x800x915mm	1110x710x610mm	40 kg	535 ltr	500 kg



Many other dimensions and colors palletboxes are possible

Contact our product specialists for more info.