

# Moulded Gratings Fixing Clips Swiss Solutions

## Swiss Solutions Moulded Grating Fixing Clips AISI316 stainless steel A4

**M-Clip** To mount the grating panel the M-Fixing Clip is the most used fixing clip. Can be supplied as separate clip of as complete set with bolt, nut, plain washer and spring washer. Important for ordering is to pay attention on the height of the grating panel. The material of the M-Fixing Clip is Stainless Steel AISI 316 (A4 fasteners).

**J-Clamp** To connect the M-Fixing Clip with a beam underneath without drilling holes in the construction a J-Clamp is needed. The material of the J-Clamp is Stainless Steel AISI 316.

**C-Clip** For connecting 2 panels together the C-Clip is required. Easy mounting and always supplied as a set with a hexagon head bolt and spring washer. The hexagon nut is welded on the clip for easy fastening. Important for ordering is to pay attention on the height of the grating panel. The material of the C-Clip is Stainless Steel AISI 316 (A4 fasteners).

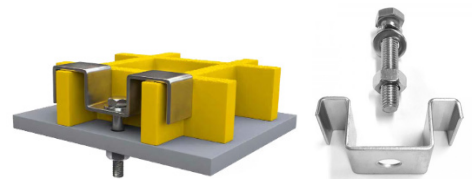
**L-Clip** For easy fixing the panel on the edges of the panel the L-Fixing Clip is designed. Can be supplied as separate clip of as complete set with bolt, nut, plain washer and spring washer. Important for ordering is to pay attention on the height of the grating panel. The material of the L-Fixing Clip is Stainless Steel AISI 316 (A4 fasteners).

**Grating Disc** For direct fixing to support underneath. To use with M6 bolt (length to suit the grating depth). Bolt sunken to prevent trip hazard. Compatible with numerous bolt and screw types. Made from Stainless Steel 316. To use in combination with open mesh gratings 25mm/38mm.

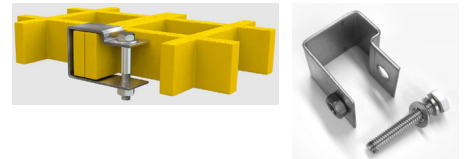
**Twingrid (Mini Mesh) M-Clip** For direct fixing to support underneath. M6 bolt (length to suit grating depth). Bolt sunken to prevent trip hazard. Compatible with numerous bolt and screw types. Stainless Steel 316.



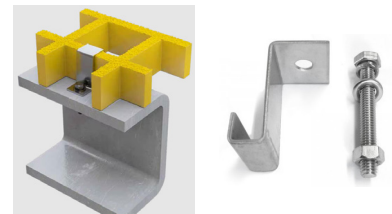
M-Fixing Clip



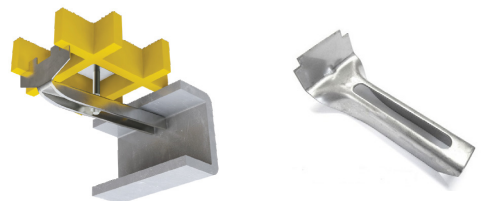
C-Clip



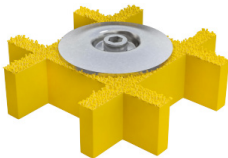
L-Clip



J-Clamp



Grating Disc



Twingrid Mini Mesh M-Clip

