

Vyrtych Indoor LED Luminaires

VYRZYCH GRIFON LED

The Interior lighting fixture GRIFON-LED IP40 is designed for offices, meeting rooms, schools and commercial areas. Surface wall or ceiling mounted. The driver is type EP - electronic 220-240Vac, 50/60Hz and 220-240Vdc 0Hz.

Complies with relevant EMC regulations. Meets photobiological safety according to EN 62471:2009. Suitable for persons with high sensitivity to UV radiation and blue spectrum part.

Housing white painted steel sheet RAL 9003. Diffuser OP (Opal Plexiglass), MP (Microprismatic) low UGR. UV stabil plastic components.

Screwless terminal block for easy mounting, maximum diameter of wires 2.5 mm². The lighting fixture is prepared for loop-in (possibility of connection of two cables). Standard rubber plug M20 for diameter cable 7-12 mm.

LED Light source 4000K, CRI +80, MacAdam3 (also available in 3000K).

Calculated life time LED modules:

L80B10 ta30 - 75.000 hours, L70B10 ta30 - 110.000 hours.

Tolerance of luminous flux and power input of the lighting fixture +/- 10%.

For ambient temperatures of +30°C. Factory warranty 5 years.

Options available as: EM - Non-maintained emergency lighting (1h, 3h).

MULTI - maintained emergency lighting (1h, 3h).

Dimmable ballast (DSI, DALI). 2.7K - 6.5K various color temperatures.

NANO lighting fixtures can be protected by special nano-layer (hydrophobic, oleophobic or antibacterial protection). IP43 - higher degree of protection.

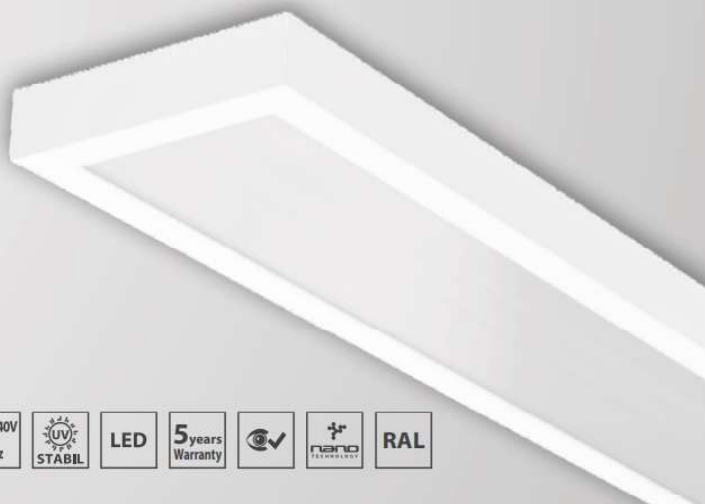


rmn

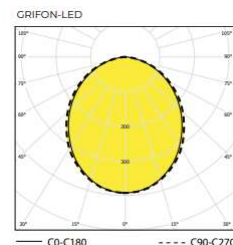
VYRZYCH

GRIFON-LED

IP 40



Article No.	Description	Watt	Lumen	Dimensions in mm AxBxC	Mounting spacing in mm DxEx	Light color
83VT057120	Grifon-LED-OP 3200-4K	24	2546	580x160x55	520x106	4000K
83VT057121	Grifon-LED-OP 6400-4K	48	5092	1080x160x55	940x106	4000K
83VT057122	Grifon-LED-OP 8200-4K	59	6462	1580x160x55	1440x106	4000K
83VT057130	Grifon-LED-AS 7000-4K	48	4323	1080x160x55	940x106	4000K
83VT057132	Grifon-LED-AS 9000-4K	59	5486	1580x160x55	1440x106	4000K
83VT057460	Grifon320-LED-SQ-OP 1600-4K	9	1249	320x320x55	264x160	4000K
83VT057461	Grifon320-LED-SQ-OP 2000-4K	11	1518	320x320x55	264x160	4000K
83VT057462	Grifon-LED-SQ-OP 5200-4K	33	3906	600x600x55	536x536	4000K
83VT057463	Grifon-LED-SQ-OP 6200-4K	41	4672	600x600x55	536x536	4000K
83VT057464	Grifon-LED-SQ-OP 7200-4K	48	5452	600x600x55	536x536	4000K
83VT057496	Grifon-LED-SQ-OP 4100-4K	25	3066	600x600x55	536x536	4000K



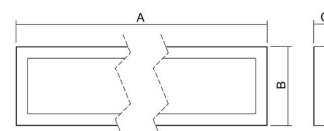
Article No.	Description	Watt	Lumen	Dimensions in mm AxBxC	Mounting spacing in mm DxEx	Light color
83VT057123	Grifon-LED-OP 3200-3K	24	2425	580x160x55	520x106	3000K
83VT057124	Grifon-LED-OP 6400-3K	48	4851	1080x160x55	940x106	3000K
83VT057125	Grifon-LED-OP 8200-3K	58	6175	1580x160x55	1440x106	3000K
83VT057131	Grifon-LED-AS 7000-3K	48	4118	1080x160x55	940x106	3000K
83VT057133	Grifon-LED-AS 9000-3K	58	5242	1580x160x55	1440x106	3000K
83VT057465	Grifon320-LED-SQ-OP 1600-3K	9	1204	320x320x55	264x160	3000K
83VT057466	Grifon320-LED-SQ-OP 2000-3K	11	1406	320x320x55	264x160	3000K
83VT057467	Grifon-LED-SQ-OP 5200-3K	33	3710	600x600x55	536x536	3000K
83VT057468	Grifon-LED-SQ-OP 6200-3K	41	4437	600x600x55	536x536	3000K
83VT057469	Grifon-LED-SQ-OP 7200-3K	48	5179	600x600x55	536x536	3000K
83VT057497	Grifon-LED-SQ-OP 4100-3K	25	2912	600x600x55	536x536	3000K



A



B



Article No.	Description
83VT120000	Cable suspender 2 mtr Y 1 pc (A)
83VT051155	Ceiling cap with transparent cable 3x1.5mm ² L= 2.5 mtr 1 pc (B)