

Linear watertight luminaire PITBUL-LED

Robust metal lighting fixture PITBUL-LED with high degree of protection is designed for areas, such as heavy industry, areas with occurrence of aggressive substances (e.g. oils, greases) and other manufacturing areas.

Complies with relevant EMC regulations. Meets photobiological safety according to EN 62471:2009.

Suitable for persons with high sensitivity to UV radiation and blue spectrum part.

Screwless three-pole terminal block, maximum diameter of wires 2.5mm².

Cable gland PG13.5 suitable for cables with outer diameter 7-12mm and sealing plug.

Rated voltage 220-240Vac 50/60Hz, 220-240 VDC 0Hz, Electronic ballast.

Light color 4000K RA>80, CRI+80, MaxAdam3. (other colors available on request).

Designed service life L80B10 70.000 hours at Ta +35°C, L70B10 100.000 hours at Ta +35°C.

Diffuser; Opal mat hardened safety glass (OP), Optional with hardened clear safety glass.

Body of white painted sheet steel RAL 9003 (optional in Stainless Steel AISI 304 or AISI 316).

In case of stainless steel version it is declared for ambient temperature decreased about 5-10 °C.

Protection category IP65, IK10 + 20J and class I.

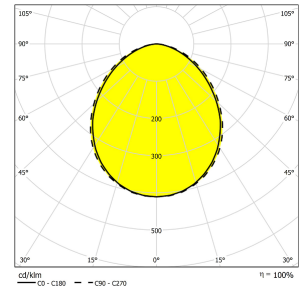
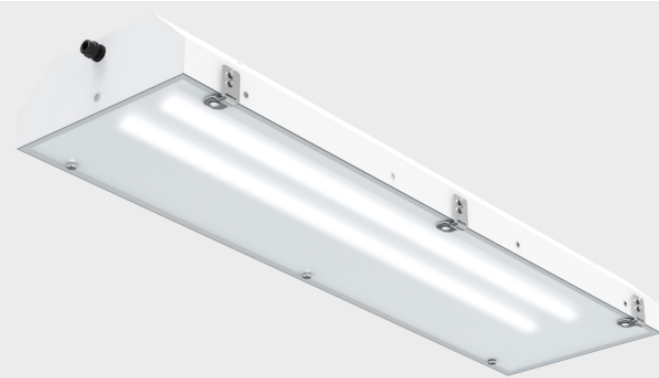
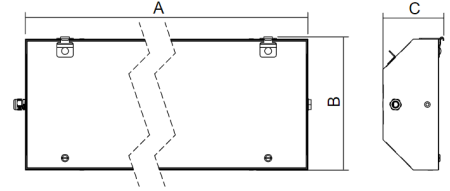
Temperature operating range from -20°C to +45/65°C (see specs.).

Multiple options on request available such as a dimmable ballast (DALI, DSI, 1-10V), emergency light,

through wiring, Gesis connector etc.

Tolerance of luminous flux and power input of the lighting fixture +/- 10%.

Manufacturers warranty 5 years.



Article No.	Description	Wattage	Lumen output	LxWxH mm	Ta max (°C)	Diffuser	Light Colour	Lightbeam
83VT051850	Pitbul-LED-OP 5000-218-4K	35	4.470	703x310x142	+65°C	Opal	4.000K	WB >80°
83VT051851	Pitbul-LED-OP 10000-236-4K	70	8.940	1313x310x142	+55°C	Opal	4.000K	WB >80°
83VT051852	Pitbul-LED-OP 15000-258-4K	104	13.410	1613x310x142	+55°C	Opal	4.000K	WB >80°
83VT051853	Pitbul-LED-OP 10000-418-4K	70	8.899	703x369x142	+55°C	Opal	4.000K	WB >80°
83VT051854	Pitbul-LED-OP 18300-436-4K	121	15.895	1313x369x142	+50°C	Opal	4.000K	WB >80°
83VT051855	Pitbul-LED-OP 29000-458-4K	195	24.845	1613x369x142	+45°C	Opal	4.000K	WB >80°

Accessories PITBUL-LED

Article No.	Description
83VT053940	Pitbul set of adjustable brackets (2 pcs) (A)
83VT054935	Pitbul set of stainless steel AISI-304 ceiling bracket (2 pcs) (B)
83VT051146	Pitbul pole bracket for Ø 50mm stainless steel AISI-304 (1 pc) (C)
83VT004642	Pitbul suspension bracket DIN 580 M8 galvanized steel (1 pc) (D)
83VT053941	Pitbul set of recessed frame 1x- 3x18W (E)
83VT053942	Pitbul set of recessed frame 4x18W (E)
83VT053943	Pitbul set of recessed frame 1x- 3x36W (E)
83VT053944	Pitbul set of recessed frame 4x36W (E)
83VT053945	Pitbul set of recessed frame 1x- 3x58W (E)
83VT053946	Pitbul set of recessed frame 4x58W (E)

The PITBUL-LED is also available as SF version which is Silicone free according to VDMA 24364, especially for paint spray cabins.

PITBUL-LED Optional Stainless Steel housing available in AISI 304 & AISI 316

