

Vyrtych STAFORD-LED Vandal-proof lighting IP65

Vandal-proof Lighting Vyrtych STAFORD-LED IP65 IK10

Recessed antivandal lighting fixture STAFORD-LED with resistance against dust and with splash water resistance is designed for areas with high risk of damage, such as prison cells, psychiatric hospitals, underpasses, tunnels, underground stations and railway station platforms.

Ballast: EP – electronic 220-240 V / 50-60 Hz AC, 220-240V DC 0Hz.

Light source: LED, 4000K, CRI >80, MacAdam3.

Housing: White painted steel sheet RAL 9003.

Diffuser: Opal polycarbonate (PC).

Reflector: White painted steel sheet RAL 9003.

Fastening: Recessed ceiling mounting.

Connection: Screw connector three-pole terminal block, maximum diameter of wires 2.5mm². Standard equipment: 2 pcs cable gland, washers with rubber to seal mounting holes, safety screws (it is necessary to order additionally 83VT004778 bit for safety screw with socket head and pin s=3).

Calculated lifetime – LED modules: L80B10 ta30 – 70.000h L70B10 ta30 – 100.000h

Complies with relevant EMC regulations. Meets photobiological safety according to EN 62471:2009.

Suitable for persons with high sensitivity to UV radiation and blue spectrum part.

Protection category IP65, IK10.

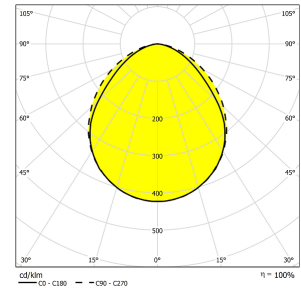
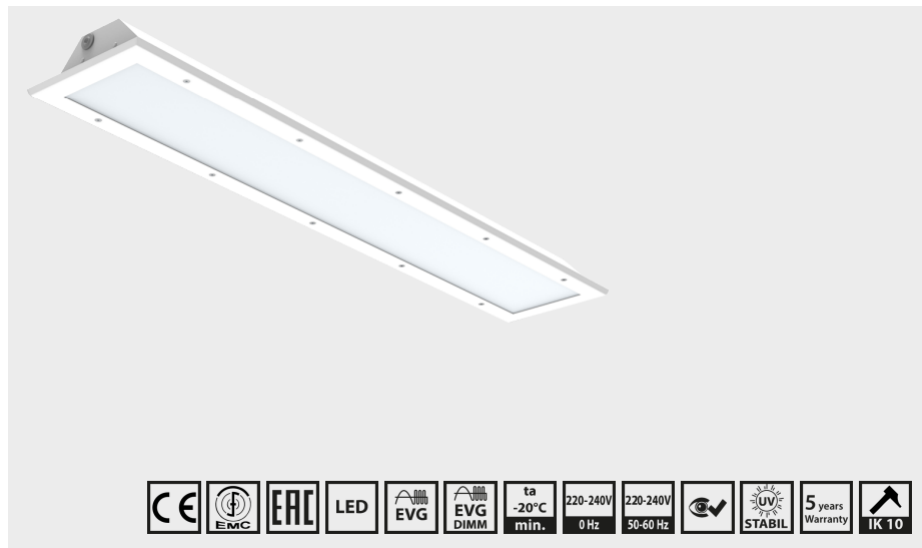
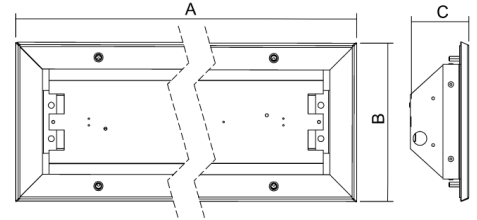
Ta from Min. -20°C to Max. +30°C

Optional: EM Non-maintained emergency lighting (1h, 3h), DIM dimmable ballast (DSI, DALI), Colour temp. 2.700K - 6.500K, MW Sensor, MULTI maintained emergency light (1h, 3h), RAL other colour scale, 1/3F single phase or three phase through wiring connection, maximum diameter of wires 2.5mm, NEREZ housing produced from Stainless Steel (AISI 304 or AISI 316) in case of stainless steel version its declared for ambient temperature decreased about 5-10°C. Hardened safety glass, NIGHT LIGHT - equipped with 4-8W LED source for night-time lighting 3K or 4K, Insulation Class II.

Tolerance of luminous flux and power input of the lighting fixture +/- 10%.

Special installation box available in case of installation in concrete wall or ceiling.

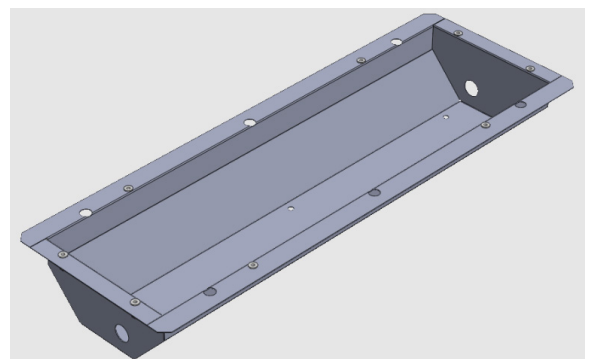
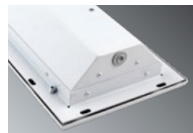
Manufacturers warranty 5 years.



Article No.	Description	Wattage	Lumen output lm	Ta max (°C)	IP Class	Dimensions AxBxC	Mounting Hole mm	Colour K
83VT057690	STAFORD-LED OP 3500-4K	21	2.562	+30°C	IP65	653x255x95	605x200	4.000K
83VT057691	STAFORD-LED OP 4650-4K	29	3.368	+30°C	IP65	653x255x95	605x200	4.000K
83VT057692	STAFORD-LED OP 5350-4K	34	3.890	+30°C	IP65	653x255x95	605x200	4.000K
83VT057693	STAFORD-LED OP 7000-4K	43	5.052	+30°C	IP65	953x255x95	905x200	4.000K
83VT057694	STAFORD-LED OP 8000-4K	51	5.838	+30°C	IP65	953x255x95	905x200	4.000K
83VT057695	STAFORD-LED OP 9300-4K	58	6.736	+30°C	IP65	1253x255x95	1205x200	4.000K
83VT057696	STAFORD-LED OP 10650-4K	68	7.781	+30°C	IP65	1253x255x95	1205x200	4.000K

Accessories:

Article No.	Description
83VT004778	Bit for safety screw with socket head and pin S=3
83VT002022	STAFORD Installation box L=1253mm
83VT002025	STAFORD Installation box L=953mm
83VT002026	STAFORD Installation box L=653mm



STAFORD optional Installation Box for installation in concrete wall or ceiling.