

RMN NEWSLETTER

Sunny Summertime 2021

It was an extreme busy first half year. We managed to deliver multiple urgent projects within an extreme short time frame, despite to all the news about extending lead times, lack of raw materials, problems with container transport and the Brexit. Expectations are that the second half year is very challenging in lead times and availability. It looks like during the summer and autumn this year many things will return to a kind of normal and probably employees will return to their office and meet their colleagues again.

We wish you a good summer holidays and look forward to meet you again in real life again instead of from behind a computer screen. Since mid May we slowly started with normal meetings again and that was very pleasant instead of all the Teams Meetings. Customers appreciate it that they have a real face-to-face talk and that you can show or demonstrate the required products.

With our partners we are continuously improving products and services which we share in this quarterly newsletter with you as trusted customer.

MIKO MARINE

RMN DORDRECHT MIKO EMERGENCY STOCK

Beside the Miko Marine Norway head office Miko Marine has decided to create a new stock hub for the Miko Pipe Plug in our warehouse. Rotterdam is one of the major harbours in the world and with this decision it is more easily to act faster and avoid delay in delivery. The most frequent used plug sizes are now directly available from our warehouse.

Beside this specific products RMN holds stock for several of the Miko Underwater Magnets and the Miko Emergency Response Bag (ERB).

Miko Marine is well known for its standard and custom made products for in water repair and salvage and serve customer all over the world. RMN is part of the global Miko Marine Network for the Benelux and Denmark and is serving the Superyacht Market.

MIKO MARINE UNDERWATER MAGNETS

Holding force from 90 kg. up to 2.000 kg. Reliable and short delivery times.



Summer 2021



Repair Management Nederland B.V.

More management less firefighting

THE MIKO MARINE WRV-8000 PIPE PLUG

The WRV-8000 Pipe Plug is an expansion plug for sealing pipe openings below the water surface. It is used for planned operations during maintenance, in-water survey or repair, as well for emergency and salvage operations.

A watertight seal is established against the inside of the pipe by closing the turning bar, pressing the aluminium discs together and expanding the special rubber rings. The crossbar prevents the plug from being sucked-in. The through-bore and valve (exception type A) enable the pipe to be flooded before removing the plug.

The product sheet on our website shows the available sizes.

RMN MIKO MARINE STOCK SIZES

The Dordrecht stock sizes are from nominal diameter 60mm up to nominal diameter 325mm.

Smaller and larger diameters will be shipped from Norway.



RMN NEWSLETTER



SEALITE PIPE FLOATS SL-PF SERIES

Rotationally moulded from UV-stabilized polyethylene.

Marine Pipe Floats PF Series

Sealite pipe floats are rotationally moulded from UV-stabilized polyethylene, and can be secured around pipes, hoses and cables for use in dredging and other marine environments. Each pipe float consists of two halves with the associated hardware, which makes it easy to stack for storage and transportation. Extra features are tapered internal ends to allow the pipe to flex and an internal anti-slip mechanism.

Optional floats can be filled with closed-cell polyurethane foam to prevent water ingress in the unlikely event of damage. Available in sizes 8, 10, 12 and 24 inches pipe OD.

SEALITE Solar Marine Lantern SL-15 1-2NM+

The Sealite Solar Marine Lantern SL-15 1-2NM+ for multiple applications and is the ideal marine light on dredge pipelines. The lantern offers superior visibility and is designed to be maintenance free. Installation only takes a few minutes, life expectancy up to 12 years and service life over 5 years. Optional available with an ON/OFF switch for temporary installations such as on worksites.

The lantern is available in Red, Green, White, Yellow and Blue. Comes with 16 user-adjustable IALA flash characteristics, a 32 automatic step-down intensity settings based on power demand of the flash code.

Life expectancy of the LED >100.000 hours.

Autonomy >50 days (14 hours darkness, 12,5 % duty cycle).

Waterproof IP68, detachable bird-deterrent spike.

According to regulations of USCG in 33 CFR part 66 and part 88.15 for lights on dredge pipelines

Signal colours compliant to IALA E-200-1



RMN NEWSLETTER

WENCON PROTECTS

With Wencon metal-free epoxy products long lasting protecting of expensive equipment

Wencon Solutions for long term protection

We often see that expensive parts of a vessel or in an industrial plant are damaged by Bi-metallic corrosion, wear etc. within a short time. Expensive parts as seawater filter units can be completely destroyed by this Bi-metallic corrosion within less than 5 years. This can be prevented by protecting with a two-layer 600 micron Wencon Epoxy Coating Product. The type of Wencon Coating depends on the medium, temperature and flow. In this case the 5 year old vessel went to dry-dock and three large seawater filters needed to be renewed. In this case we made an offer to the customer for complete new filter units including spacers and all coated with a two-layer Wencon White and Blue Coating. This 600 micron can withstand seawater to penetrate for 12-15 years. After that or when small mechanical damages exist during cleaning operations the Wencon Coating can easily be repaired by the crew. Wencon has proven over more than 35 years that with the Wencon Products and Repair Methods the lifetime of the crucial parts of a ship or installation can be extended significantly.

Short delivery times and cost saving

RMN can offer standard Seawater Filters or Custom made Seawater Filters. In critical situations we are able to produce with our partners very quickly a custom made filter unit in case there is no standard one available within a reasonable time. Each Seawater Filter can be delivered with the Wencon Protective Epoxy System.

Refurbish your Seawater Filter with Wencon and what about your Carbon Footprint

With refurbishing critical parts such as a Seawater Filter Housing the carbon footprint reduces enormous, it saves over 80% of CO₂ EQ in compare with ordering a new one.

Think Circular and be on time to refurbish you equipment before it is too late.

Do you want to know more about the Wencon System contact our Wencon specialists.



WENCON®

Repair Management Nederland B.V. – Jade 300 – 3316 LJ Dordrecht – Netherlands
Phone +31 (0)85 27 32 216 – email info@rmn.eu – www.repairmanagement.nl

RMN NEWSLETTER



TEPEX JUNCTION BOX RK-01 THE TIME SAVER

TEPEX Junction Boxes are made from PA glass-fibre reinforced polyamide in the colour black. It is a high quality enclosure IP66 and IK08 shock resistant and certified for use in Ex ATEX Zone 1, 21, 2, 22.

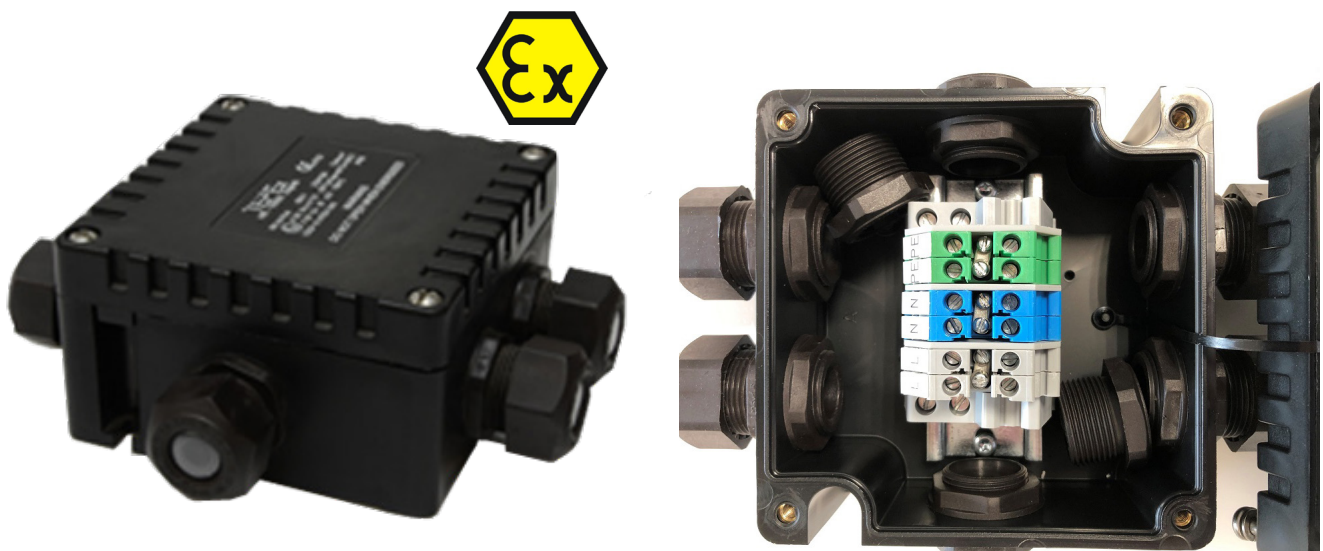
The enclosure RK 01/514-6 is for RMN a stock item and comes complete with a DIN-rail with 2 blue, 2 grey and 2 earth 1x4mm² terminal blocks, bridge terminals and 2x M25 plugs and 4x cable glands for 7-15mm diameter cable.

All external parts are made of Stainless Steel AISI316L.

Customers are;

The boxes are so price competitive that **many of the RMN customers order them also for NON-ATEX Applications.** The configuration we supply saves costly labor time and money on installation.

Especially the customers who order LED luminaires and LED Floodlights order this quick installation boxes together with the lights. Also many other configurations available.



RMN NEWSLETTER

BALS REEFER CONTAINER PLUGS AND SOCKETS

BALS Elektrotechnik Reefer Container devices 31A 4p 3h 380-440V IP67



QUICK  CONNECT

BALS Reefer container devices are

- approved and certified by VDE, DNV-GL
- validated according to IEC standards, CE and RoHS material restrictions.
- suitable for nominal operating temperature -25° up to +50°C (environmental condition)
- engineered and made in Germany

The TLQ serie plugs and connectors

- screwless connection technology patented by BLS
- spring clamp technology
- safe, more reliable and maintenance-free
- terminals delivered in open position
- repeatable control of wiring, by fingertip
- all types of copper conductors accepted, solid stranded, adaptation to all cross sections
- wiring with or without cable lugs
- constant contact force over lifetime of installation, adjusting vibrations and temperature fluctuations
- one piece enclosure, mechanical crash resistance

They are

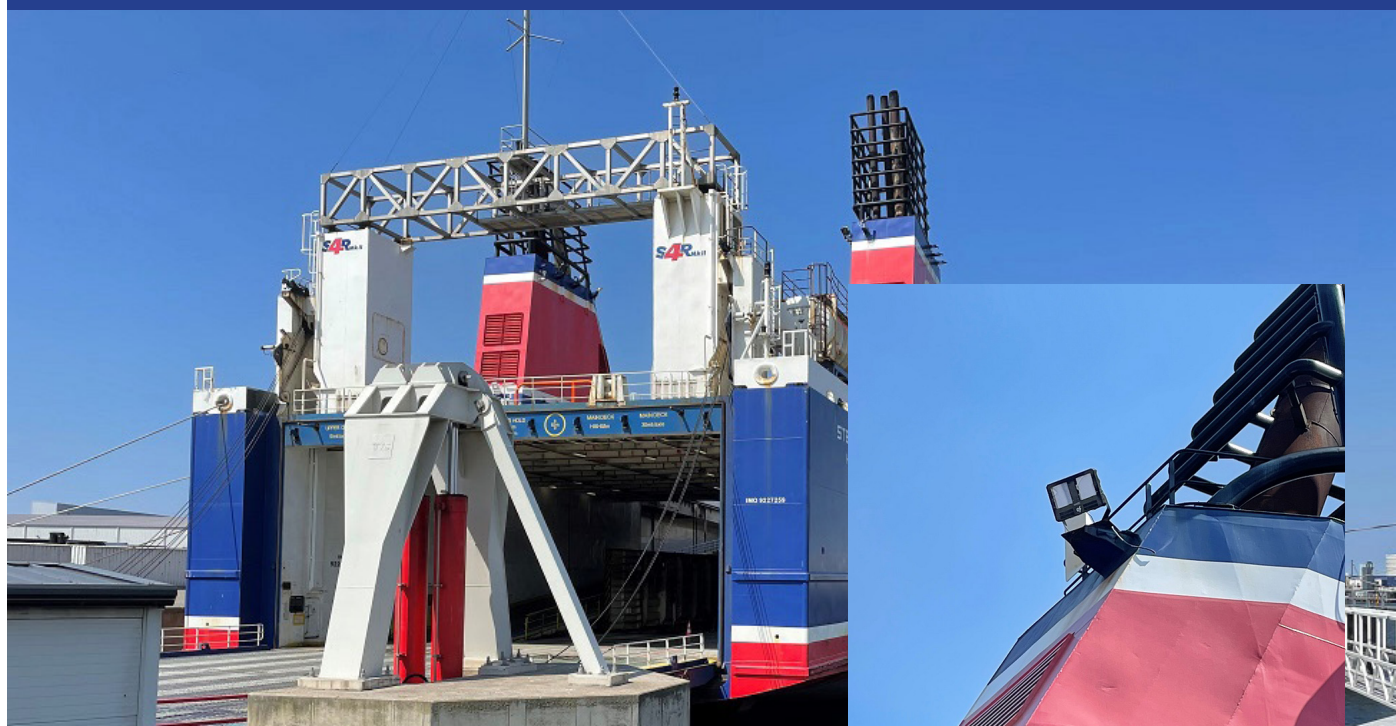
- 63A standard switches (suitable for temporary overload states and cross sections up to 16mm²)
- main switches optionally equipped with auxiliary contacts for signal or control purpose
- enclosures with optionally signalisation multi-pin sockets for signal or control purpose
- enclosures with optionally preventing systems for humidity absorption
- operating window and sockets lid opening direction to the top, preventing moisture and dust ingress during manipulation
- enclosures with optionally no cable gland cut-outs or pre-punches on the top, prevents icing or water accumulation
- socket terminals are equipped with the maintenance free QUICK-CONNECT technology, resistant to temperature changes influence

DNV GL

Products from BALS Elektrotechnik are certified by DNV GL



RMN NEWSLETTER



NTE SISTEMAS PM COLOSSUS LED FLOODLIGHT

The PM-Colossus LED Floodlight as replacement for conventional Floodlight

Caused by the need for energy savings and reduction on CO₂ emission many shipowners using now the PM-Colossus on board. The large Modular LED Floodlight has an enormous light output with an extreme low energy consumption. Customers are surprised about the performance of this light fixture. Many vessels will transform their conventional lights to LED caused by changing EU regulations. Another issue is the availability of spare parts for the old technique light fittings as many manufacturers stop to produce these due to a too low demand.

As extra service we are able to provide light calculations for the renewing of your luminaires and floodlights. Our specialists will visit you even on board to advise you making the right choice.



DOUBLEPOWER!! SEA LED IP68 THE WINNER

The most durable LED luminaire from doublepower!! for use in Marine conditions

The doublepower!! SEA LED IP68 is a great success. Many shipowners are ordering this unique luminaires for complete relighting projects on board. Often they order the luminaires together with the TEPEX RK-01 junction box, cable and other needed electrical components. Doublepower!! can deliver this luminaire even custom made and if preferred with the required type and length of cable already connected in the factory, which saves installation time on board. The luminaire is extremely cost-effective. Also available as emergency light fitting.



RMN NEWSLETTER



NEW SECOM EX ATEX50 LED FLOODLIGHTS

LED Floodlights designed to operate in areas with risk of explosion.

The luminaires complying with the ATEX 2014/34UE directive, which is applicable in the European Union. Available in 100w, 150w and 200w with an optic of 90° included in the LED lamps and projection angle available from 0° to 180°.

Made of thermo painted injected aluminium and waterproof protective polymer with UV protection. Standard supplied with 5700K colour temperature. Estimate life span L80B10 100.000 hours.

ATEX category II 2 G db IIC T6 Gb ECM 18 ATEX 2599. GAS marking II 2 G Ex db IIC T6 Gb, DUST marking II 2 D Ex IIIC T80°C Db.

Ambient temperature range -30°C/50°C. The anti-corrosion level can reach WF2 Pf >95. Protection degree IP66 and IK08. Dimensions 276x374x171/261mm.

TEPEX EX ATEX BULKHEAD LIGHT FITTING

A light fitting designed for use in confined or restricted places in Zone 1, 2, 21, 22

A robust and light alloy enclosure with a weight of only 4 kg. Easy to install in areas where available space is restricted. The diffuser is made from strong borosilicate glass with a silicone gasket. Optional available with a stainless steel protection grid.

Aparatus category is II 2 GD, explosion protected Ex eb mb IIC T6, Ex tb IIIC T80°C Db.

For use with environment temperatures; -30°C ÷ +50°C. Protection degree IP66 and IK08. The rated voltage is 230Vac ±10% (48-230 Vac/dc ±15% Autonomous power supply on request). Estimated service life is 70.000 hours and CCT is 2.700K.

The power consumption of the light fitting is only 17W and luminous flux is 1.575 lumen. The light fitting can be ordered with transparent, green or red glass.



RMN NEWSLETTER

PFERD VICTOGRAIN

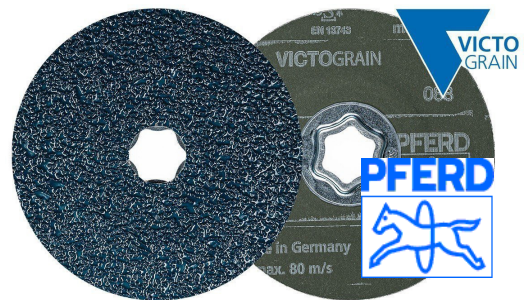
VICTOGRAIN is an extreme abrasive grain

The **VICTOGRAIN** grinding products are used for extremely aggressive grinding with an extremely high tool life and outstanding stock removal on steel and hard materials. **Applications are** leveling, deburring, surface work, work on edges, weld dressing.

The disc can be used on steels and heat-treated steels over 1.200 N/mm² (over 38 HRC) and many other materials.

The product is **available as** Fibre Disc, CombiClick Fibre Disc, a special COOL grinding type and as CC-GRIND Solid and Flex.

The discs are suitable to use on a cordless angle grinder and an angle grinder.



Valves supply and valve overhaul

Do you know that RMN supplies already for many years all kind of valves. The range consist from small ball valves to big sized butterfly valves. If required with class 3.1 certification or pressure tested with Class Approval Certificate. Different material choices for all kind of applications. With short direct communication between RMN and manufacturer to achieve shortest lead times and best possible price level. Also a choice in different actuators for the valves. Sometimes customers want us to refurbish their old valves. RMN has the right partner for this job. This partner has a very well equipped workshop with skilled service engineers. They are able to overhaul every valve type and are even certified to carry out pressure tests. The customer will first received a cost overview to assess whether the repair job is economically justifiable.



RMN NEWSLETTER

SWISS SOLUTIONS CREATING A SAFER ENVIRONMENT

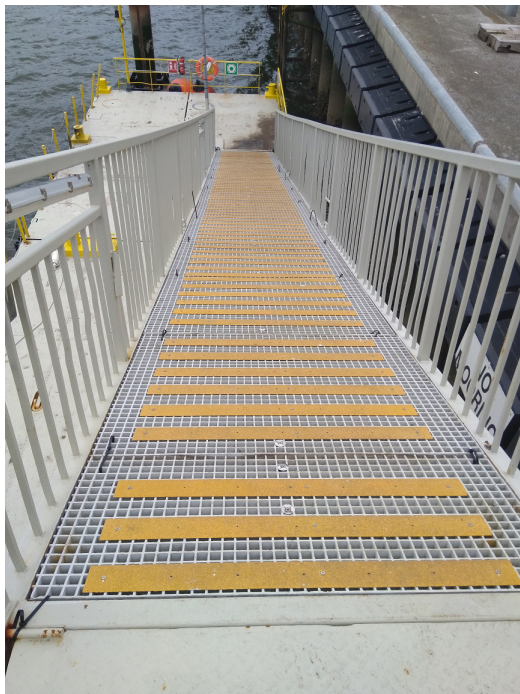
Swiss Solutions Moulded Grating Panels

RMN can supply the Swiss Solutions Moulded Grating Panels complete panels or if desired pre-cut panels in the customers required dimensions.

RMN offers standard grating panels made from fibreglass reinforced high grade chemical resistant Isophthalic Polyester Resin (ISO).

The panels come standard with a non-slip surface grit or on request as a concave top.

Complete panels can most of the time be delivered direct from stock in the heights 25 & 38mm. The pre-cut panels will have an extended lead time. Panels can easily be cut in the right dimensions direct on board of at the industrial plant by using a thin dry cut diamond blade for an small angle grinder. RMN supplies also this tools and all the hardware needed for panel installation.



Swiss Solutions Deck Grip Strips

Swiss Solutions Deck Grip Strips are fast and easy to install. Can be used to deal with slip issues associated with standard timber decking or in this case as an extension on a concave top moulded grating to provide extra non-slip surface. RMN was asked for a cost effective solution for this gangway where the gratings had no sufficient non-slip surface. The expensive way was to exchange the gratings in a type with a rough non-slip grit surface but that was out of the question. We suggested to install our outdoor grit surface decking strips on top of the gratings. After installation the slip issue is solved and everyone is satisfied. Benefit is also that installation could take place without having the gangway out of order. RMN supplied the Deck Grip Strips and needed hardware for installation.

Swiss Solutions HD Stair Tread Covers

Swiss Solutions Stair Tread Covers provides a covering of the entire step area and is generally used where slip hazards are present. A special hard wearing grit is applied on the top surface that not only provides an extremely slip resistant surface but also withstand the rigours of even the busiest environments. There is a choice between colours and grit type. It comprises of a high quality composite of glass woven matting impregnated with Isophthalic Polyester Resin. RMN offers standard the Heavy Duty type but for low traffic areas we also have the possibility for a budget type. Length cutting is easily using a thin diamond cutting blade on a small angle grinder.

PDF material data sheets can easily be found on our website and free to download.

