

## WINTER 2023-2024



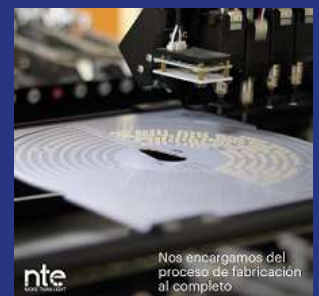
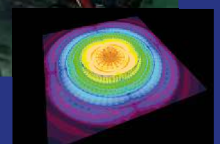
The year went by extremely fast. We have reached again a good and steady grow. Also exports to various surrounding European countries have increased. We supplied our partners with several products for multiple successful projects. We are therefore very pleased with the cooperation with this specific companies and we like to give some extra attention on a few of the projects in this newsletter.

We thank all our relations for their trust and cooperation during 2023. The entire RMN Team wishes you and your family a Happy Christmas Holidays and a Prosperous and Healthy 2024 and look forward to see you back next year.

## CONTENTS

Which topics are in this newsletter:

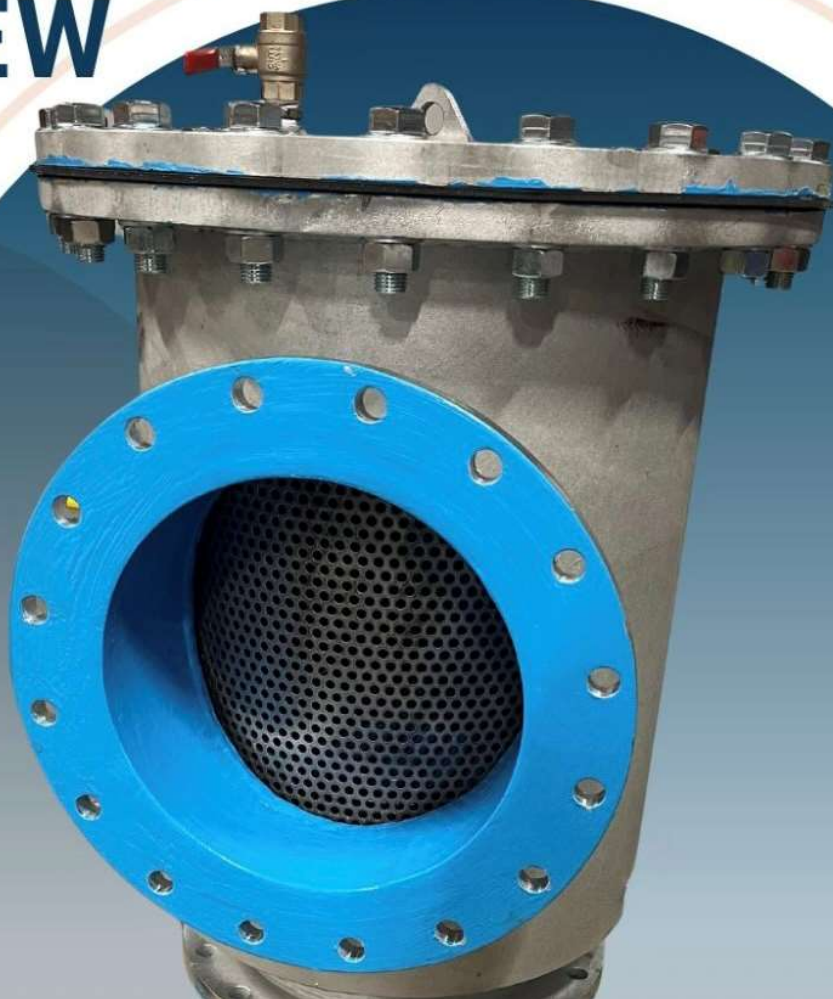
- 1) Wencon Protect from new.
- 2) Van Der Straaten Aannemingsbedrijf B.V. and the cooperations with RMN
- 3) FlexLED Work Lighting an unique concept
- 4) NTE Offshore cable carousel illumination for service partner Minderhoud Techniek
- 5) Vyrtych SALUKA LED, a versatile IP66 luminaire for industrial and maritime applications
- 6) NTE LED PCB Development and production
- 7) Estil Ex ATEX Hoisting equipment
- 8) Bostik Born2Bond Technical adhesives
- 9) CRC Products



**WENCON MORE THAN ONLY A PRODUCT**

## WENCON®

# PROTECT FROM NEW



[www.repairmanagement.nl](http://www.repairmanagement.nl)

### **RMN WENCON PROTECTION OF NEW PARTS**

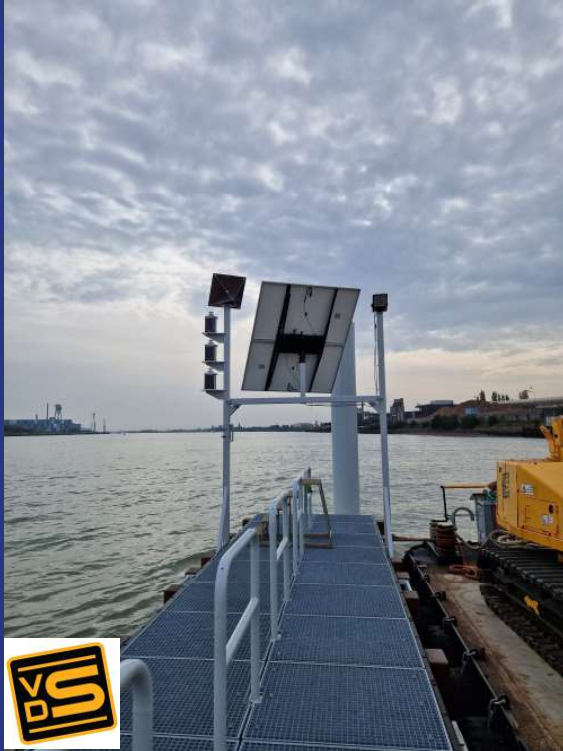
New parts are often poorly protected against external influences, such as seawater, chemicals or abrasive substances. It is therefore recommended to add a high-end protective product before installation and commissioning and thus significantly extend its lifespan. Wencon Coatings are known for the very high-quality and the ability for extreme long protection of expensive and crucial parts.

### **PROTECTION EXTENDS LIFESPAN AND SIGNIFICANTLY REDUCES CO2 EMISSIONS**

Repair Management Nederland B.V. – Jade 300 – 3316 LJ Dordrecht – Nederland  
Telefoon +31 (0)85 27 32 216 – email [info@rmn.eu](mailto:info@rmn.eu) - [www.repairmanagement.nl](http://www.repairmanagement.nl)



## PROJECT FLOATING JETTY



### VAN DER STRAATEN AANNEMINGSMAATSCHAPPIJ B.V.

For over 115 years the company Van Der Straaten has been a specialist in projects on the land to water area. Over time the company has specialized in geotechnical engineering, foundation technology, water engineering, civil technique, infrastructure and steel construction building. No challenge is too big for this Zeeland based company. There is a lot of in-house craftsmanship and know-how, resulting in very high quality projects in the Netherlands but also abroad. The company has a large fleet of equipment such as pontoons, work vessels, a crane vessel, mobile cranes, pile foundation equipment, truck, drilling equipment, CPT vehicles and excavators. Van der Straaten is based in Hansweert direct at the Westerschelde, where a modern utilized office has been placed at the waterfront. Furthermore a number of modern construction halls for production and assembly of entire project constructions are located on this premises. RMN partner for Van Der Straaten in advise and supply of products for constructions on- and offshore, which are mainly the Sealite Solar Marine Lanterns and the NTE (Solar) light fixtures and systems.

This project where we cooperated with them was a floating jetty at the Schelde in Belgium. We supplied all LED Solar lighting navigation light fixtures and LED Solar floodlight systems. RMN is proud to work with such an innovative company as Van Der Straaten is and they are therefore a very loyal and pleasant partner for us. Pictures credits Van Der Straaten.

### SOLAR ILLUMINATION

Both Sealite and NTE have an extensive experience in the development and manufacturing of high-quality SOLAR lighting products. Not only for projects as here described where there is no fixed power connection it is a welcome solution but also on many applications with a possibility to a standard power source the Solar systems are more often used to be not dependent on fixed power-net cables and the associated energy costs. The return on investment of the systems is extremely short.

### SOLAR ILLUMINATION:

This helps you to achieve a positive CO2 footprint and therefore contributes to a greener future.

## FLEXLED



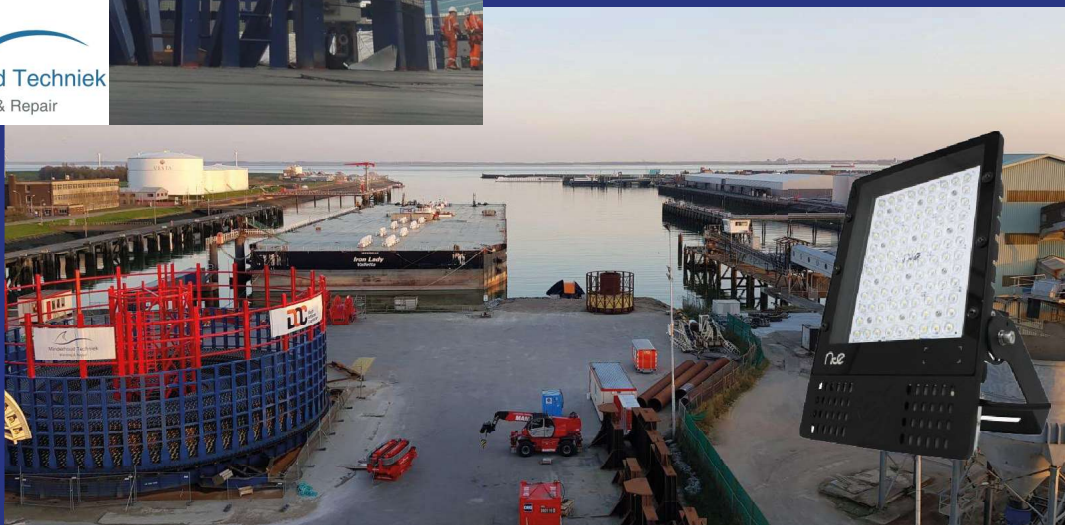
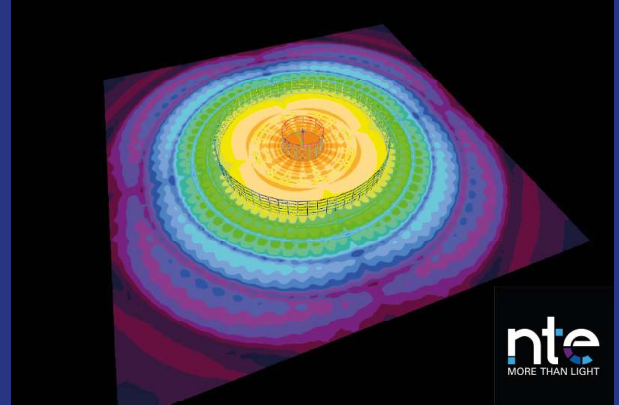
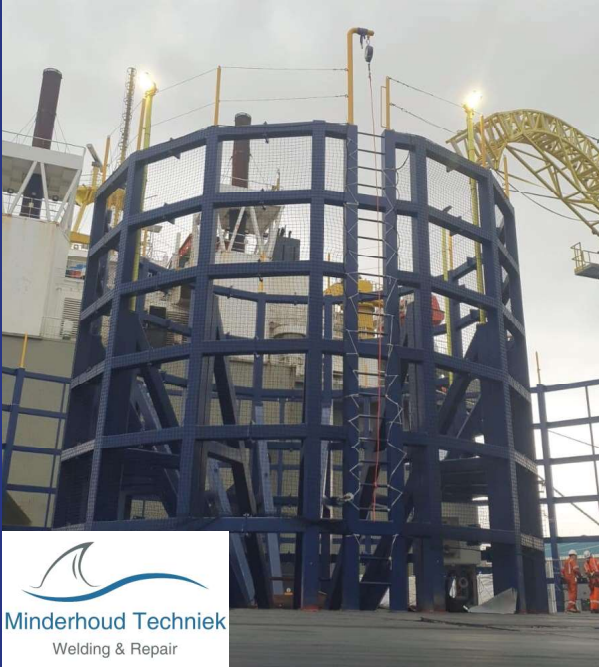
## FLEXLED HIGH QUALITY WORK LIGHTING

**FlexLed** is a newly developed product from Switzerland. It is an easy to move high-quality work lighting with an extremely high light output. This LED lighting provides a very unique light beam of 240° (2×120°), providing good light quality in all areas of the workplace. The Heavy Duty reel comes with a FlexLED length of 25 meters and can be extended to a total length of 100 meters. The lighting was developed in Switzerland to provide good and reliable work lighting in tunnel construction, but of course there are countless other applications possible. The power consumption is 13W/m with an efficiency of 1.500 lumen per meter with extreme low glare. So 25 meters provides an enormous amount of light of 37.500 lumen with a light color of 4.000 Kelvin. The lighting is IP65 and IK08 and the reel of 25 meters weighs only 6 kilos.

## TICCO MAAGDENBERG

This company is very well known in the Maritime Sector with Exhaust Gas Scrubber Repairs. In this type of closed environments it is extremely important to have good light during the repair job. The company recently purchased the FlexLED and started to use it. Pictures posted on LinkedIn show how much benefit the service engineers have with this flexible way of lighting the working area. The repairs of scrubbers consist of surface treatment, welding work and 2-Component Epoxy work, whereby the company also uses Wencon Products if necessary. Pictures scrubber credits Ticco Maagdenberg.

## NTE OFFSHORE LIGHTING



### MINDERHOUD TECHNIK AND OFFSHORE CONSTRUCTIONS

For a large Offshore Service Provider, Minderhoud Techniek was awarded with an order to carry out welding- and steel work for two large cable carousels for the Offshore Wind Sector. This enormous constructions are build at the dockside so they can easily be placed on the deck of the vessel. The large diameter makes it impossible to transport it over the road. Minderhoud Techniek is already for many years a trusted service partner of RMN and with this the question of supplying the right LED lighting for the carousels came to us. We asked the manufacturer NTE Sistemas to make a light calculation for this special project, where the right amount of light must illuminate the cable carousel (also when filled with cable) and the fixtures must not get in the way. The very compact and high-quality NTE PM-PRO LED equipped with a special certified Anti-Saline protective layer for use in Maritime salt water conditions is been used. The PM-PRO LED was chosen because of its high light output lm/W and the wide choice of optics and light colors. The optics used in this application is 160° and with a light color of 5.000 Kelvin.

Each of the carousels received 4 pieces of NTE PM-PRO 36K resulting in a total light output of 141.780 lumen. Pictures carousels credits Minderhoud Techniek.



## VYRTYCH SALUKA LED



## VYRTYCH SALUKA LED

The SALUKA LED lighting fixture, shows a growing use in the Maritime Sector. It is an industrial fixture made of pressed sheet steel with a RAL 9003 powder coating protective finish. The fixture is optionally available in Stainless Steel (AISI304 and AISI316) versions. It has an opal diffuser of tempered safety glass as standard, which provides a pleasant diffuse light output. Due to the flat glass diffuser it is easy to keep it clean and also it takes up less space than using a polycarbonate diffuser. Also unlike polycarbonate, glass is not subject to aging. The light fixture is available in different light colors to meet the user's needs. Standard it is developed for an ambient temperature of -20°C to +40/45°C which is sufficient for most applications. For areas with a higher ambient temperature there is a special version available that goes up to +60°C. Designed lifespan is L80B10 70.000 hours at Ta +40°C, or L70B10 100.000 hours at Ta +40°C. The protection is IP66 and IK07, class I. The SALUKA is fully developed and produced in the EU using European components.

**The SALUKA LED is also available in Ex version for Zone 2, 22 as type SALUKA-N-LED.**



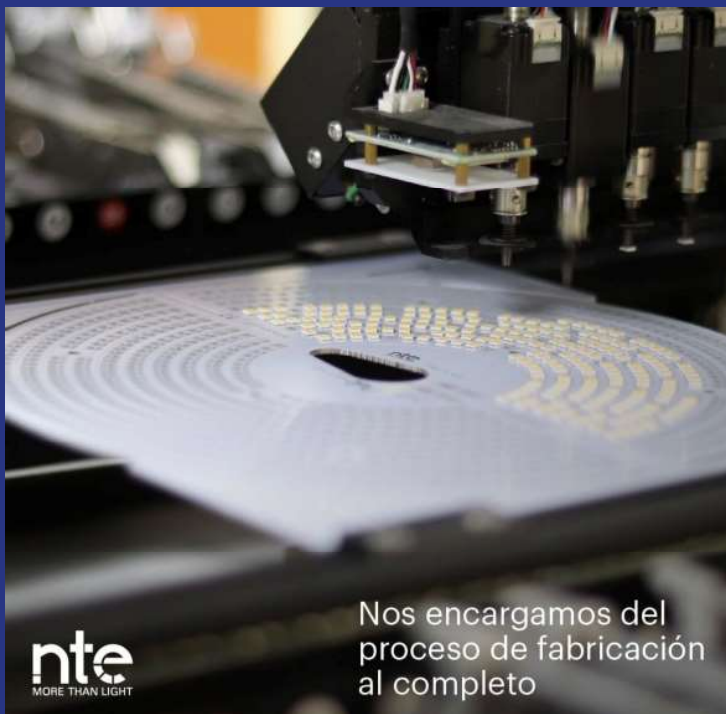
**rmn**  
Repair Management Nederland B.V.  
More management less firefighting

# RMN NEWSLETTER



**rmn**  
Repair Management Nederland B.V.  
More management less firefighting

## NTE LED PCB PRODUCTION



Nos encargamos del proceso de fabricación al completo

**n-te**  
MORE THAN LIGHT

### NTE PM-TITAN LED PCB

The Powerful NTE PM-TITAN is a LED fixture with an enormous light output. The by NTE specially developed and produced LED PCB has a CCT (K) of 5.000 Kelvin with a CRI >71 and special for TV recordings a TLCI of >90. Optional other LED color PCB's are available for this fixture. The designed lifespan is superior to >100.000 hours (L90B10). The fixture is widely used for sports fields and sports stadiums, for that purpose it has many certificates. A special control unit provides countless control options of this lighting. Via an online connection the manufacturer can read out the fixtures parameters and make adjustments. Unique is the special optical system which guarantees extremely low light pollution. The luminous flux to the upper hemisphere is <1%. The picture shows the lighting along the highway A16 at Rotterdam. The power connection is 95/270Vac 48/63Hz. Protection is IP66 and IK08. Class I and optional Class II.

### NTE LED PCB

NTE Sistemas from Spain has a lot of knowledge in-house for developing the most efficient LED PCB's. These are produced on their own fully automatic modern machines. This method of manufacturing ensures an extremely reliable product where a consistent uniform quality is achieved. The LED PCB's are available in different dimensions and capacities so tht the entire range of NTE LED fixtures can be equipped with it. Several light fixtures comes with special lenses over each individual LED in order to be able to offer many different light angles.

The LED fixtures from NTE always have a 5 year manufacturers warrantee on the entire fixture. Optional it is with many fixtures also possible to order with a 10 years warrantee. This must be indicated when ordering a new fixture.



**ef** EFFICIENCY  
by nte

**TITÁN**

Con sistema de telegestión

Adapta la iluminación a cada momento del juego

Proyectors - Efficiency





## CRC PRODUCTS

### CRC Technical spray products

CRC Industries is a global leader in manufacturing specialty chemicals for maintenance and repair, used by professionals. The products are used in industry, the maritime sector, trucks, electrical and aviation.

CRC has several ECO Category 1 products which means that they have a high level of organic degradability in accordance with OECD standard 301.B (Test standard).

Various products also meet Category 2 which means that they are within the general criteria (exclusion criteria) which may not contain certain products. These include (1) heavy metals, whose toxicity and persistence in the environment are known. (2) Substances of concern (Can be cause long-term adverse effects on the aquatic environment). (3) Substances with a global warming potential >150, such as HFC's. (4) RoHS registered substances. (5) Nitrite. (6) Aromatic hydrocarbons. (7) Chloride & Bromide. (8) Phosphates and nonylphenol (in cleaning agents). More information about Eco can be found on Eco-label.com.

### High filling level of active product due to different propellant

CRC uses an unique system of propellants. At CRC they use CO2 as propellant in the aerosol cans. This is much more environmentally friendly than the well-known propane/butane propellants.

Another advantage is that there is only 5% propellant in the aerosol can and 95% active product.

### The total share of active product is at CRC per aerosol tin approx. 35% higher.

Various lubricants have the NSF H1 Foodsafe Approval and are therefore safe to use in environments where they may come in contact with foodstuffs.

### CRC Spray paints aerosols

CRC Acrylic Paint is a high-quality paint that protects the surface and at the same time has a long lasting effect providing an intensive color. It is a water-based product which is much less harmful to the environment than the solvent-based paints. CRC Acrylic paint is available in a wide variety of RAL Colors and a grey primer to use as a base coat if necessary for a better coverage and adhesion of the paint to the substrate.

**CRC Producten**

**CRC SP 400 Outdoor conserverende water laag droog**  
Beschermingsmiddel voor 2 jaar. De unieke vormel met oxisolofobische conservatiestructuur onder andere beschermt tegen water en vocht. Het unieke vormel met oxisolofobische conservatiestructuur onder andere beschermt tegen water en vocht. Het unieke vormel met oxisolofobische conservatiestructuur onder andere beschermt tegen water en vocht.

| Artikel nr. | Emmerinhoud         | Inhoud | VRI    | MSH      |
|-------------|---------------------|--------|--------|----------|
| 102020      | CRC SP 400 spuitbus | 250 ml | 12 st. | 45 09 11 |
| 102021      | CRC SP 400 spuitbus | 500 ml | 12 st. | 45 09 11 |

**CRC Fast Dry Degreaser**  
Vetoplosser met een laag viscositeit, los alle vet en aansamelingen op en verlaat geen achtergrond. Het unieke vormel met oxisolofobische conservatiestructuur onder andere beschermt tegen water en vocht. Het unieke vormel met oxisolofobische conservatiestructuur onder andere beschermt tegen water en vocht.

| Artikel nr. | Emmerinhoud                     | Inhoud | VRI    | MSH      |
|-------------|---------------------------------|--------|--------|----------|
| 102022      | CRC Fast Dry Degreaser spuitbus | 250 ml | 12 st. | 45 09 11 |

**CRC-2-36**  
Vetoplosser met een laag viscositeit, los alle vet en aansamelingen op en verlaat geen achtergrond. Het unieke vormel met oxisolofobische conservatiestructuur onder andere beschermt tegen water en vocht. Het unieke vormel met oxisolofobische conservatiestructuur onder andere beschermt tegen water en vocht.

| Artikel nr. | Emmerinhoud       | Inhoud  | VRI    | MSH      |
|-------------|-------------------|---------|--------|----------|
| 102023      | CRC-2-36 spuitbus | 250 ml  | 12 st. | 45 09 11 |
| 102024      | CRC-2-36 spuitbus | 500 ml  | 12 st. | 45 09 11 |
| 102025      | CRC-2-36 em       | 5 ltr   | 1 st.  | 45 09 11 |
| 102026      | CRC-2-36 em       | 20 ltr  | 1 st.  | 45 09 11 |
| 102027      | CRC-2-36 em       | 200 ltr | 1 st.  | 45 09 11 |

**CRC SP Precision Cleaner**  
Niet ontwaterende vetoplosser voor lichte vuilstoffen op elektrische of elektronische onderdelen. Het unieke vormel met oxisolofobische conservatiestructuur onder andere beschermt tegen water en vocht. Het unieke vormel met oxisolofobische conservatiestructuur onder andere beschermt tegen water en vocht.

| Artikel nr. | Emmerinhoud                       | Inhoud | VRI    | MSH      |
|-------------|-----------------------------------|--------|--------|----------|
| 102028      | CRC SP Precision Cleaner spuitbus | 250 ml | 12 st. | 45 09 11 |

**CRC-3-36**  
Vetoplosser met een laag viscositeit, los alle vet en aansamelingen op en verlaat geen achtergrond. Het unieke vormel met oxisolofobische conservatiestructuur onder andere beschermt tegen water en vocht. Het unieke vormel met oxisolofobische conservatiestructuur onder andere beschermt tegen water en vocht.

| Artikel nr. | Emmerinhoud       | Inhoud | VRI    | MSH      |
|-------------|-------------------|--------|--------|----------|
| 102029      | CRC-3-36 spuitbus | 250 ml | 12 st. | 45 09 11 |
| 102030      | CRC-3-36 spuitbus | 500 ml | 12 st. | 45 09 11 |

**CRC Contact Cleaner**  
Vetoplosser met een laag viscositeit, los alle vet en aansamelingen op en verlaat geen achtergrond. Het unieke vormel met oxisolofobische conservatiestructuur onder andere beschermt tegen water en vocht. Het unieke vormel met oxisolofobische conservatiestructuur onder andere beschermt tegen water en vocht.

| Artikel nr. | Emmerinhoud                  | Inhoud | VRI    | MSH      |
|-------------|------------------------------|--------|--------|----------|
| 102031      | CRC Contact Cleaner spuitbus | 250 ml | 12 st. | 45 09 11 |
| 102032      | CRC Contact Cleaner spuitbus | 500 ml | 12 st. | 45 09 11 |

**CRC Quick Dry Contact Cleaner**  
Vetoplosser met een laag viscositeit, los alle vet en aansamelingen op en verlaat geen achtergrond. Het unieke vormel met oxisolofobische conservatiestructuur onder andere beschermt tegen water en vocht. Het unieke vormel met oxisolofobische conservatiestructuur onder andere beschermt tegen water en vocht.

| Artikel nr. | Emmerinhoud                     | Inhoud | VRI    | MSH      |
|-------------|---------------------------------|--------|--------|----------|
| 102033      | CRC-QD Contact Cleaner spuitbus | 500 ml | 12 st. | 45 09 11 |

**CRC Lustra Clean II**  
Vetoplosser met een laag viscositeit, los alle vet en aansamelingen op en verlaat geen achtergrond. Het unieke vormel met oxisolofobische conservatiestructuur onder andere beschermt tegen water en vocht. Het unieke vormel met oxisolofobische conservatiestructuur onder andere beschermt tegen water en vocht.

| Artikel nr. | Emmerinhoud                  | Inhoud | VRI    | MSH      |
|-------------|------------------------------|--------|--------|----------|
| 102034      | CRC Lustra Clean II spuitbus | 250 ml | 12 st. | 45 09 11 |

**CRC Acrylverven Spuitbussen**

**Deze acrylverven**  
CRC Acrylverf is een hoogwaardige verf die uw oppervlak beschermt en tegelijkertijd een intensieve, duurzame kleur geeft.

**De voordelen van de acrylverven van CRC Acrylverf voor goed bestand tegen inbreuken van vocht, water en vocht. Het unieke vormel met oxisolofobische conservatiestructuur onder andere beschermt tegen water en vocht. Het unieke vormel met oxisolofobische conservatiestructuur onder andere beschermt tegen water en vocht.**

- Houtoppoort afwerking na +/- 15 minuten
- Zelf droogende afwerking over meerdere lagen
- Water en/of bestendig
- Schone en vloeibare afwerking
- Voor meer informatie: 020-4810000

| Artikel nr. | Emmerinhoud                        | Inhoud | VRI   |
|-------------|------------------------------------|--------|-------|
| 102035      | CRC Acrylverf RAL 1013 Chroomblauw | 400 ml | 6 st. |
| 102036      | CRC Acrylverf RAL 3000 Geelbruin   | 400 ml | 6 st. |
| 102037      | CRC Acrylverf RAL 3000 Geelbruin   | 400 ml | 6 st. |
| 102038      | CRC Acrylverf RAL 5010 Geelwit     | 400 ml | 6 st. |
| 102039      | CRC Acrylverf RAL 5010 Geelwit     | 400 ml | 6 st. |
| 102040      | CRC Acrylverf RAL 5010 Geelwit     | 400 ml | 6 st. |
| 102041      | CRC Acrylverf RAL 7001 Zwartgrijs  | 400 ml | 6 st. |
| 102042      | CRC Acrylverf RAL 7001 Zwartgrijs  | 400 ml | 6 st. |
| 102043      | CRC Acrylverf RAL 7001 Zwartgrijs  | 400 ml | 6 st. |
| 102044      | CRC Acrylverf RAL 9001 Wit         | 400 ml | 6 st. |
| 102045      | CRC Acrylverf RAL 9001 Wit         | 400 ml | 6 st. |
| 102046      | CRC Acrylverf RAL 9001 Wit         | 400 ml | 6 st. |
| 102047      | CRC Acrylverf RAL 9001 Wit         | 400 ml | 6 st. |
| 102048      | CRC Acrylverf RAL 9001 Wit         | 400 ml | 6 st. |
| 102049      | CRC Acrylverf RAL 9001 Wit         | 400 ml | 6 st. |
| 102050      | CRC Acrylverf RAL 9001 Wit         | 400 ml | 6 st. |
| 102051      | CRC Acrylverf RAL 9001 Wit         | 400 ml | 6 st. |
| 102052      | CRC Acrylverf RAL 9001 Wit         | 400 ml | 6 st. |
| 102053      | CRC Acrylverf RAL 9001 Wit         | 400 ml | 6 st. |
| 102054      | CRC Acrylverf RAL 9001 Wit         | 400 ml | 6 st. |
| 102055      | CRC Acrylverf RAL 9001 Wit         | 400 ml | 6 st. |
| 102056      | CRC Acrylverf RAL 9001 Wit         | 400 ml | 6 st. |
| 102057      | CRC Acrylverf RAL 9001 Wit         | 400 ml | 6 st. |
| 102058      | CRC Acrylverf RAL 9001 Wit         | 400 ml | 6 st. |
| 102059      | CRC Acrylverf RAL 9001 Wit         | 400 ml | 6 st. |
| 102060      | CRC Acrylverf RAL 9001 Wit         | 400 ml | 6 st. |
| 102061      | CRC Acrylverf RAL 9001 Wit         | 400 ml | 6 st. |
| 102062      | CRC Acrylverf RAL 9001 Wit         | 400 ml | 6 st. |
| 102063      | CRC Acrylverf RAL 9001 Wit         | 400 ml | 6 st. |
| 102064      | CRC Acrylverf RAL 9001 Wit         | 400 ml | 6 st. |
| 102065      | CRC Acrylverf RAL 9001 Wit         | 400 ml | 6 st. |
| 102066      | CRC Acrylverf RAL 9001 Wit         | 400 ml | 6 st. |
| 102067      | CRC Acrylverf RAL 9001 Wit         | 400 ml | 6 st. |
| 102068      | CRC Acrylverf RAL 9001 Wit         | 400 ml | 6 st. |
| 102069      | CRC Acrylverf RAL 9001 Wit         | 400 ml | 6 st. |
| 102070      | CRC Acrylverf RAL 9001 Wit         | 400 ml | 6 st. |
| 102071      | CRC Acrylverf RAL 9001 Wit         | 400 ml | 6 st. |
| 102072      | CRC Acrylverf RAL 9001 Wit         | 400 ml | 6 st. |
| 102073      | CRC Acrylverf RAL 9001 Wit         | 400 ml | 6 st. |
| 102074      | CRC Acrylverf RAL 9001 Wit         | 400 ml | 6 st. |
| 102075      | CRC Acrylverf RAL 9001 Wit         | 400 ml | 6 st. |
| 102076      | CRC Acrylverf RAL 9001 Wit         | 400 ml | 6 st. |
| 102077      | CRC Acrylverf RAL 9001 Wit         | 400 ml | 6 st. |
| 102078      | CRC Acrylverf RAL 9001 Wit         | 400 ml | 6 st. |
| 102079      | CRC Acrylverf RAL 9001 Wit         | 400 ml | 6 st. |
| 102080      | CRC Acrylverf RAL 9001 Wit         | 400 ml | 6 st. |
| 102081      | CRC Acrylverf RAL 9001 Wit         | 400 ml | 6 st. |
| 102082      | CRC Acrylverf RAL 9001 Wit         | 400 ml | 6 st. |
| 102083      | CRC Acrylverf RAL 9001 Wit         | 400 ml | 6 st. |
| 102084      | CRC Acrylverf RAL 9001 Wit         | 400 ml | 6 st. |

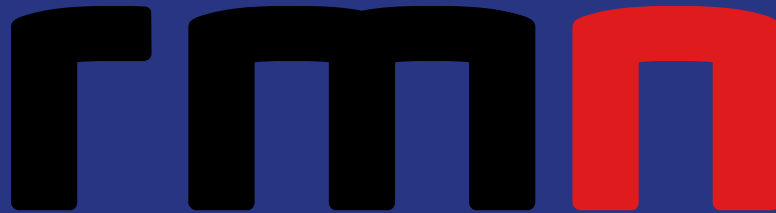
**Extra informatie**  
Voor een volledige lijst product afmetingen van de afmetingen beschrijven: contact met ons product specialisten voor meer informatie.

CRC data sheets are easy to download via the RMN website or can be send by E-mail.



**ONE STOP SHOP TECHNICAL WHOLESALER**

**FOR A DURABLE AND A GREEN FUTURE**



**Repair Management Nederland B.V.**

**More management less firefighting**

Repair Management Nederland B.V. – Jade 300 – 3316 LJ Dordrecht – Nederland

Telefoon +31 (0)85 27 32 216 – email [info@rmn.eu](mailto:info@rmn.eu) - [www.repairmanagement.nl](http://www.repairmanagement.nl)