

# Swiss Solutions Edge Grip HD

## Creating a safer environment

### Product description

#### Edge Grip Stair Nosings HD

The Swiss Solutions Edge Grip Heavy Duty Anti Slip GRP Stair Nosings are a long-lasting and highly durable fibreglass anti slip stair nosing. Two grades are available for internal and external applications.

Our Edge Grip HD Stair Nosings incorporate a unique Extreme-Core ceramic grit measuring a tough 9 on the MOHs hardness scale (diamond = 10), meaning they are twice as durable than standard quartz nosings. This means they are suitable for extreme traffic conditions, and will last for years.

The 55mm contrasted coloured nosing also makes them Building Regulation and Disability Discrimination Act Part III compliant (in particular, the sections relevant to partially sighted).

#### Suitable substrates

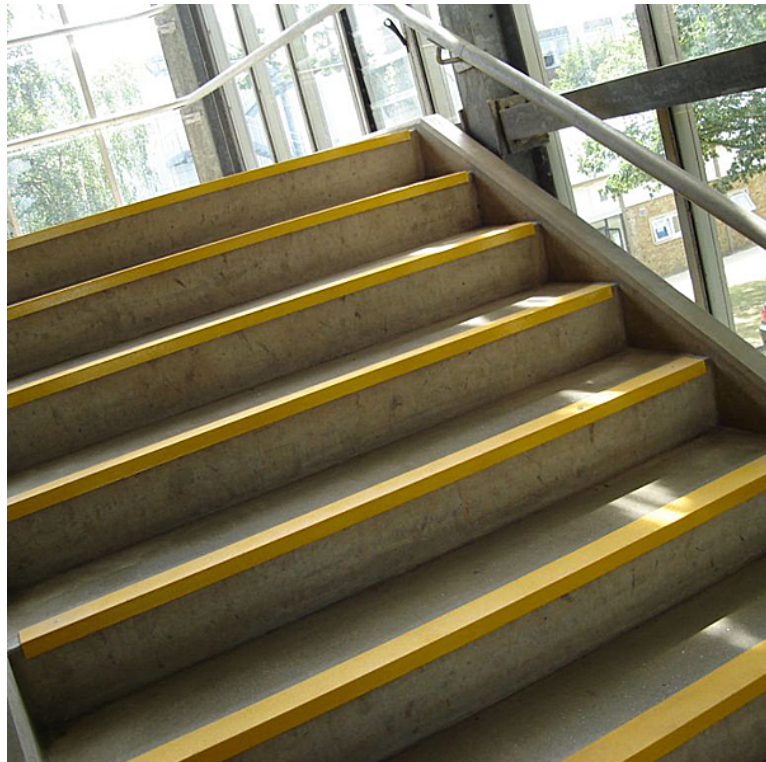
Wood, concrete, stone and metal.

#### Suitable applications

High traffic areas, spiral staircases, fire escapes, most staircases, external stairs (GRP), internal stairs, platform edges and kerb edges (GRP).

#### Product characteristics

Meets building regulations. Aids with DDA legislation. Slip resistant top surface. Impact resistant. Fire retardant option. Corrosion resistant. Lightweight. Non metallic, Non sparking. Tough and durable. Choice of colours. Choice of sizes. Quick installation. Manufactured to ISO. Design life 10 years (subject to traffic analysis).



**rmn**

Repair Management Nederland B.V.

More management less firefighting

Distribution:  
Repair Management  
Nederland B.V.

# Swiss Solutions Edge Grip HD

## Creating a safer environment

### Technical data

Standard lengths for stair nosings:	600mm 750mm 800mm 1000mm 1200mm 1500mm 2000mm 3000mm	Available colours:	Yellow, White or Black Yellow (LVR-81), White (LVR-86)
Stair nosings profile:	55mm x 55mm or 70mm x 30mm	Chemical resistance:	GRP made from ISO resin as standard.
Tolerances (including cut):	+/- 3-4mm	Load capabilities:	Credited with no load bearing strength (requires adequate substrate)
Thickness:	3mm	Impact resistant:	Yes
Service temperature:	-20°C to 80°C	Corrosion resistant:	Yes
General use:	Standard pedestrain traffic	Top finish:	Heavy Duty Edge Grip: antislip grit top finish.
		Other info:	GRP made via pultrusion method.

### Slip resistance test results

Slip Grip Heavy Duty GRP slip resistance levels measured using the Pendulum Test method (WF rubber slider).

Slip resistance of a floor for able bodied pedestrians. The higher the value the safer the floor.

Top surface	Dry reading	Wet reading	Four S Pendulum value	Potential for slip
Type "E"	76	70	Above the 65 35 to 65 25 to 35 25 and lower	Extremely low Low Moderate High

To ensure that the above slip resistant levels are maintained the panels should be kept clean in accordance with the information below.

### Cleaning and maintenance

Use of a stiff brush will usually be sufficient when cleaning the Edge Grip HD to remove every day dirt. For more stubborn items, it is recommended that a mild detergent such as a mild degreaser is used and than rinsed with warm water. It is important to remove any excess water from the Edge Grip prior to being put back into use with suitable absorbent materials or a wet/dry vacuum cleaner. Where circumstances allow, Edge Grip HD can be power washed on a low setting. If Edge Grip Heavy Duty has been sealed with a sealant; repeated use of a pressure washer could undermine the integrity of the sealant. The security of the fixings should be checked on regular basis. Circumstances will vary, based upon the volume of foot traffic etc., but as guide, monthly inspections would be advisable.

### Handling & storage

Safe handling practices should always be employed and the appropriate Personal Protection Equipment is to be worn. Store the stair nosings flat and upside down.

### Personal protection equipment

It is recommended that the following Personal Protection Equipment is worn for installation of the Slip Grip nosings and further protective measures may be necessary but this will depend on the installation environment:

Bonding: Use eye goggles, protective gloves, safety boots

Cutting & mechanical fixing: Use ear defenders, eye goggles, dust mask (Fine dust), protective gloves, safety boots.



# Swiss Solutions Edge Grip HD

## Creating a safer environment

### Cutting

Edge Grip Heavy Duty can be cut to size using an angle grinder with diamond blade. Cutting should be carried out externally or where there is dust extraction or suitable ventilation and appropriate protective equipment as described should be worn. A jigsaw can be used for trimming or for occasions where only a small amount of cutting is required. Use a laminating jig saw cutting blade.

### Preparation

Ensure that the area is clean, dry and free of loose and friable material. Any "dished" or damaged surface areas should be patched repaired to provide a reasonably flat and consistent surface.

Dry fit all stair nosings to ensure they fit freely and that they sit flat down on the surface. If required, Edge Grip HD can be trimmed on site to suit, ideally using a small grinder with diamond blade or a skill saw with special blade.

Please ensure that goggles, dust mask and gloves are worn at all times when any form of cutting is involved.

### Recommend fixing

We recommend a double fixing method for installing the Edge Grip HD stair nosings. This consists of an appropriate high strength gap filling adhesive (SP350 or 3M 5200 or similar) and mechanical fixings.

If mechanical fixings are not suitable for your particular application, a high strength gap filling adhesive can be used on its own but care should be taken to ensure Edge Grip HD is completely adhered to the substrate and regular checks should be made on the material. Ideally, we would recommend the use of a structural adhesive (SP350 or 3M 5200 or similar) if you will not be using mechanical fixings.

### Application

1) Apply a 6mm bead (this may need to be increased depending on the substrate conditions) of the high strength gap filling adhesive around the periphery of the underside of the stair nosing approx. 15mm from the edges. If you are fixing your nosing to carpet or similar material - you can skip the adhesive section of application. The adhesive is best applied using a proper skeleton gun or at big applications using a pneumatic cartridge gun.

2) Immediately press the nosing firmly to the substrate to ensure adequate transfer of adhesive (depending on the size of the bead, this will elevate the nosing by approximately 1-1.5mm). A firm bond will be achieved in about one hour under normal circumstances and conditions.

3) Drill two holes on each side of the stair nosing, the first approximately 15mm in from each edge. For larger nosings, it may be necessary to have further fixing points in the center of the tread. Pre-drilling the holes before drilling into the substrate is recommended. Always use screws a little longer than the plug to obtain a good mechanical fixing.

