

Swiss Solutions Edge Grip Safety Glow

Creating a safer environment

Product description

Edge Grip Safety Glow Stair Nosings

The Swiss Solutions Safety Glow is a glow in the dark stair tread with a photoluminescent step nosing, in either yellow or white, which during daylight hours absorbs light, emitting it at night for up to four hours.

They can be installed easily and quickly with Slip Grip GRP Stair Tread Cover Fixing Kits. These stair tread nosings can be pre-drilled. They can either be trimmed on site or can be cut to your exact requirements.

Suitable substrates

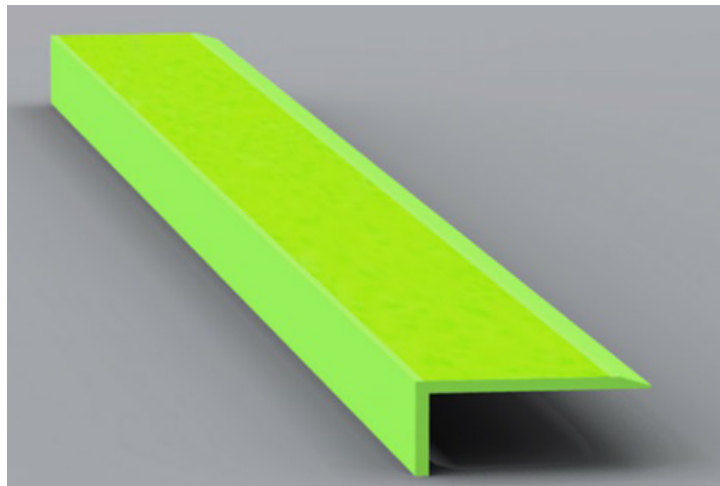
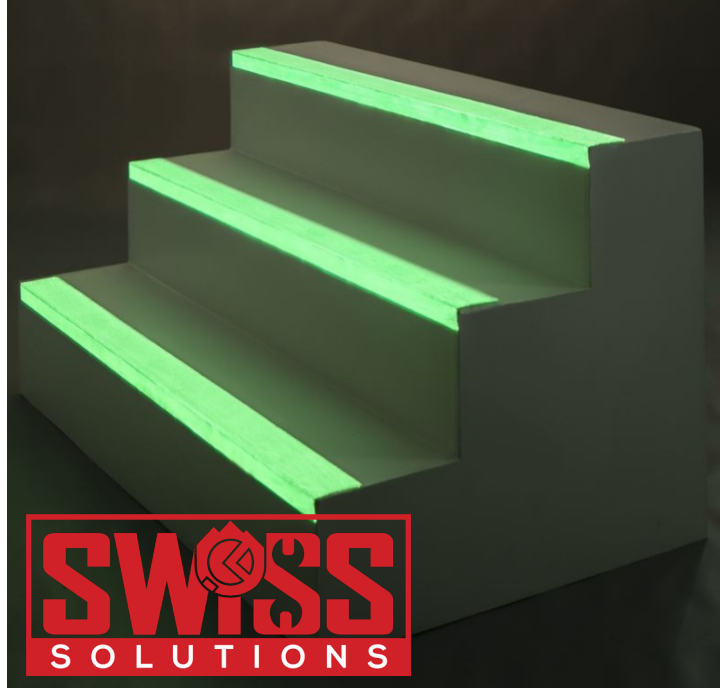
Wood, concrete, stone and metal.

Suitable applications

Public areas, walkways, fire escapes, train track crossings, areas of limited light in night time hours.

Product characteristics

Glow in the dark technology - our Safety Glow Stair Nosings Glow in the Dark for between 3-4 hours. 55mm DDA compliant nosing. Cut to size up to 3 meter wide. Superior, chemical resistant surface. Suitable for heavy pedestrian areas. DRilling for mechanical fixing recommended. Installs over virtually any substrate.



rmn

Repair Management Nederland B.V.

More management less firefighting

Distribution:
Repair Management
Nederland B.V.

Swiss Solutions Edge Grip Safety Glow

Creating a safer environment

Technical data

Standard lengths for stair nosings:	750mm 1000mm 1200mm 1500mm 2000mm 3000mm	Available colours:	Hi-vis photoluminescent
Stair nosings profile:	70mm x 30mm	Fire retardant:	No
Tolerances (including cut):	+/- 3-4mm	Impact resistant:	Yes
Thickness:	3mm	Corrosion resistant:	Yes
Service temperature:	-20°C to 80°C	Chemical resistant:	Yes
Grade:	Coarse	Lightweight:	Yes
General use:	Standard pedestrian traffic	Non Sparking:	Yes
		Non Metallic:	Yes
		Fixing:	Please refer to the installation guide for full details.

Slip resistance test results

Slip Grip Heavy Duty GRP slip resistance levels measured using the Pendulum Test method (WF rubber slider).

Slip resistance of a floor for able bodied pedestrians. The higher the value the safer the floor.

Top surface	Dry reading	Wet reading	Four S Pendulum value	Potential for slip
Type "E"	76	70	Above the 65 35 to 65 25 to 35 25 and lower	Extremely low Low Moderate High

To ensure that the above slip resistant levels are maintained the panels should be kept clean in accordance with the information below.

Cleaning and maintenance

Use of a stiff brush will usually be sufficient when cleaning the Edge Grip to remove every day dirt.

For more stubborn items, it is recommended that a mild detergent such as a mild degreaser is used and then rinsed with cold water. It is important to remove any excess water from the Edge Grip prior to being put back into use with suitable absorbent materials or a wet/dry vacuum cleaner. Where circumstances allow, Edge Grip can be power washed on a low setting. If Edge Grip has been sealed with a sealant; repeated use of a pressure washer could undermine the integrity of the sealant.

The security of the fixings should be checked on regular basis. Circumstances will vary, based upon the volume of foot traffic etc., but as a guide, monthly inspections would be advisable.

Handling & storage

Safe handling practices should always be employed and the appropriate Personal Protection Equipment is to be worn. Store the stair nosings flat and upside down.

Personal protection equipment

It is recommended that the following Personal Protection Equipment is worn for installation of the Slip Grip nosings and further protective measures may be necessary but this will depend on the installation environment:

Bonding: Use eye goggles, protective gloves, safety boots

Cutting & mechanical fixing: Use ear defenders, eye goggles, dust mask (Fine dust), protective gloves, safety boots.



Swiss Solutions Edge Grip Safety Glow

Creating a safer environment

Cutting

Edge Grip Safety Glow can be cut to size using an angle grinder with diamond blade. Cutting should be carried out externally or where there is dust extraction or suitable ventilation and appropriate protective equipment as described should be worn. A jigsaw can be used for trimming or for occasions where only a small amount of cutting is required. Use a laminating jig saw cutting blade.

Preparation

Ensure that the area is clean, dry and free of loose and friable material. Any "dished" or damaged surface areas should be patched repaired to provide a reasonably flat and consistent surface.

Dry fit all stair nosings to ensure they fit freely and that they sit flat down on the surface. If required, Edge Grip can be trimmed on site to suit, ideally using a small grinder with diamond blade or a skill saw with special blade.

Please ensure that goggles, dust mask and gloves are worn at all times when any form of cutting is involved.

Recommend fixing

We recommend a double fixing method for installing the Edge Grip Safety Glow stair nosings. This consists of an appropriate high strength gap filling adhesive (SP350 or 3M 5200 or similar) and mechanical fixings.

If mechanical fixings are not suitable for your particular application, a high strength gap filling adhesive can be used on its own but care should be taken to ensure Edge Grip is completely adhered to the substrate and regular checks should be made on the material. Ideally, we would recommend the use of a structural adhesive (SP350 or 3M 5200 or similar) if you will not be using mechanical fixings.

Application

1) Apply a 6mm bead (this may need to be increased depending on the substrate conditions) of the high strength gap filling adhesive around the periphery of the underside of the stair nosing approx. 15mm from the edges. If you are fixing your nosing to carpet or similar material - you can skip the adhesive section of application. The adhesive is best applied using a proper skeleton gun or at big applications using a pneumatic cartridge gun.

2) Immediately press the nosing firmly to the substrate to ensure adequate transfer of adhesive (depending on the size of the bead, this will elevate the nosing by approximately 1-1.5mm). A firm bond will be achieved in about one hour under normal circumstances and conditions.

3) Drill two holes on each side of the stair nosing, the first approximately 15mm in from each edge. For larger nosings, it may be necessary to have further fixing points in the center of the tread. Pre-drilling the holes before drilling into the substrate is recommended. Always use screws a little longer than the plug to obtain a good mechanical fixing.

