

Swiss Solutions Slip Grip Flexi Lite

Creating a safer environment

Product description

Slip Grip Flexi Lite

The Swiss Solutions Slip Grip Flexi Lite flat sheets are only 1mm thick and are ideal for areas where an exposed edge of a thicker flat sheet might present a trip hazard. The sheets can be fixed to a floor by machinery or in a doorway etc. and not present a trip hazard or where less flexible sheets aren't suitable. The sheets can be used undulating walkways and ramps, or surfaces that are not perfectly flat. Flexi Lite offers total manoeuvrability, but is still strong, so won't crack. The resins are flexible, and combined with the 1mm thickness allow the product to be fixed to an undulating surface. The sheets are not suitable for mechanical fixing and should be fixed using a SP350 Fix and Seal High Tack Adhesive. The sheets are available in black, yellow and white. They can easily be trimmed to the required dimensions.

Suitable substrates

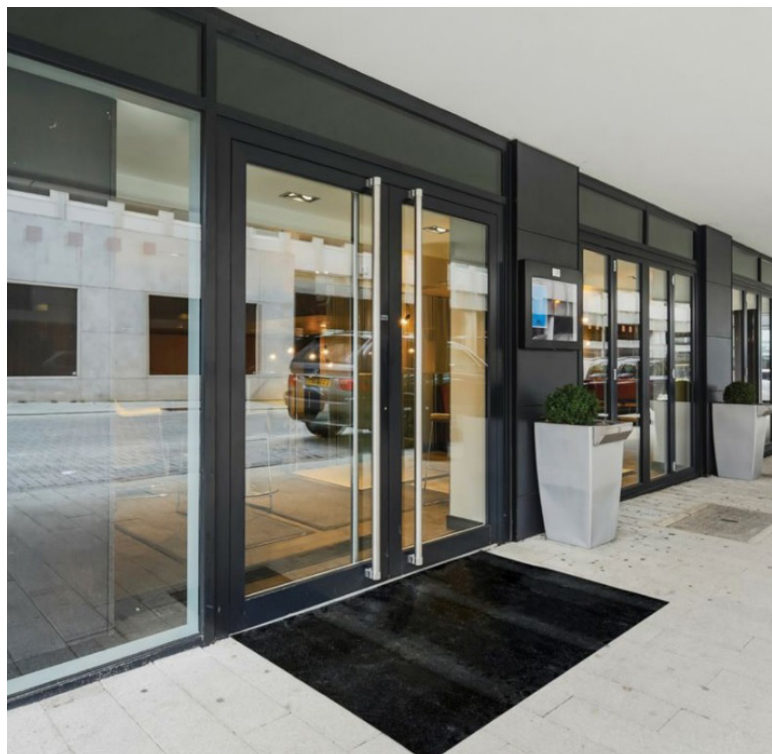
Wood, concrete, stone and metal

Suitable applications

Ramps, Walkways, mezzanine floors.

Product characteristics

Low profile - no trip hazard. Ideal for laying down in doorways, around oily machinery or on floors that are prone to getting wet. Available in 3 colours.



Distribution:
Repair Management Nederland B.V.

Swiss Solutions ® – Jade 300 – 3316 LJ Dordrecht – Netherlands
Phone +31 (0)85 27 32 216 – email info@rmn.eu – www.rmn.eu

Swiss Solutions Slip Grip Flexi Lite

Creating a safer environment

Technical Data

| | | | |
|-----------------------------|--|----------------------|---------------|
| Standard sizes for sheets: | 600mm x 600mm 800mm x 800mm 1200mm x 1200mm 2400mm x 1200mm | Service temperature: | -20°C to 80°C |
| Cut to size service: | Yes | Fire retardant: | N/A |
| Tolerances (including cut): | +/- 3-4mm | Impact retardant: | No |
| Colours of sheets: | Black, Yellow, White | Corrosion resistant: | Yes |
| Thickness: | 1mm | Chemical resistant:: | Yes |
| | | Light weight: | Yes |
| | | Non sparking: | Yes |
| | | Non metallic: | Yes |
| | | Grade: | Coarse |

Slip resistance test results

Slip Grip Flexi Lite slip resistance levels measured using the Pendulum Test method (WF rubber slider).

Slip resistance of a floor for able bodies pedestrians. The higher the value the safer the floor.

| Top surface | Dry reading | Wet reading | Four S Pendulum value | Potential for slip |
|-------------|-------------|-------------|--|--|
| Coarse grit | 71 | 63 | Above 65 35 to 65 25 to 35 25 and lower | Extreme low Low Moderate High |



To ensure that above slip resistant levels are maintained the panels should kept clean in accordance with the information below.

Cleaning and maintenance

Use of a stiff brush will usually be sufficient when cleaning the Slip Grip Flexi Lite flat sheets to remove every day dirt. For more stubborn items, it is recommended that a mild detergent such as a mild degreaser is used and then rinsed with cold water. It is important to remove any excess water from the stair threads prior to being put back into use with suitable absorbent materials. Where circumstances allow, Slip Grip Flexi Lite flat sheets can be power washed on a low setting. If Slip Grip Flexi Lite flat sheets has been sealed with a sealant; repeated use of a pressure washer could undermine the integrity of the sealant. The security of the fixings should be checked on regular basis. Circumstances will vary, based upon the volume of foot traffic etc., but as guide, monthly inspections would be advisable.

Handling & storage

Safe handling practices should always be employed and the appropriate Personal Protection Equipment is to be worn. Store the sheets flat and upside down.

Personal protection equipment

It is recommended that the following Personal Protection Equipment is worn for installation of the Slip Grip Flexi Lite flat sheets and further protective measures may be necessary but this will depend on the installation environment:

Bonding: Use eye goggles, protective gloves, safety boots

Cutting: Use ear defenders, eye goggles, dust mask (Fine dust), protective gloves, safety boots.

Swiss Solutions Slip Grip Flexi Lite

Creating a safer environment

Cutting

Slip Grip Flexi Lite flat sheets can be cut to size using an angle grinder with diamond blade. Cutting should be carried out externally or where there is dust extraction or suitable ventilation and appropriate protective equipment as described should be worn. A jigsaw can be used for trimming or for occasions where only a small amount of cutting is required. Use a laminating jig saw cutting blade.

Cut to size service: It is possible to order the sheets pre-cut to your requirements. Lead time will be longer.

Preparation

Flexi Lite flat sheets can be applied to uneven surfaces. If using an adhesive, the substrate must be clean, dry and free from oils, grease, dust and any loose particles. The underside of the flat sheet must also be clean and dry. Prior to applying any adhesive, it is advisable to carry out a dry-fit to ensure a suitable fit. Swiss Solutions recommend a fixing with a high strength adhesive or double sided tape such as SP350 Fix & Seal High Tack adhesive or similar.

Please note: Flexi Lite cannot be fixed by mechanical fixing.

Bonding

Swiss Solutions recommends the use of SP350 Fix & Seal High Tack Adhesive and Primer for the Flexi Lite sheets. The adhesive can also be used to seal around the edges and stop water lying in between the sheet and the substrate. Water will not affect the sheets but can affect the substrate such as wood or metal causing rot or rust.

Run a bead of adhesive around the perimeter of the sheet approximately 25mm in from the edges and then cross hatch at about 200 mm apart.

Apply sufficient hand pressure to bed the sheet into position.

With the recommended adhesive optimum bonding will be obtained after 24 hours (at 20°C). However, stairs can be made available for traffic a few hours after bonding, but this is subject to temperature so it is worth testing first.

