

Swiss Solutions Stair Tread Covers HD

Creating a safer environment

Product description

Stair Tread Covers HD

The Swiss Solutions Stair Tread Covers Heavy Duty offer a superior slip resistance for both interior and exterior use. Made from durable and lightweight GRP, and with a superior grit, they are twice as hard wearing as the industry standard quartz. They are also chemical resistant, providing the perfect solution for potentially hazardous areas. The low profile GRP construction is produced by the pultrusion method, which protects from bending, warping or splitting over time.

The Stair Tread Covers comprise of a high quality composite of glass woven matting impregnated with isophthalic polyester resin.

Suitable substrates

Wood, concrete, stone and metal.

Suitable applications

Fire escapes, all staircases and areas of heavy foot traffic. Internal ramps and staircases

Product characteristics

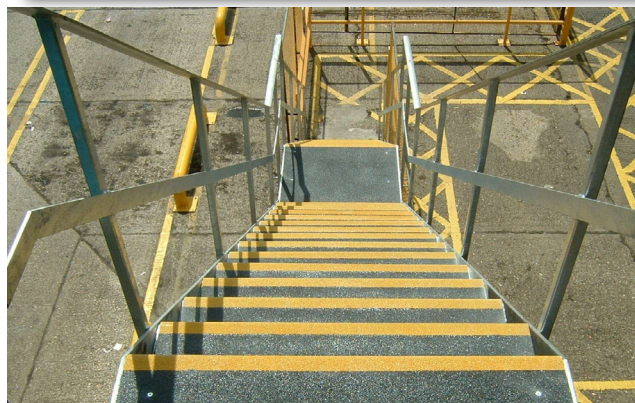
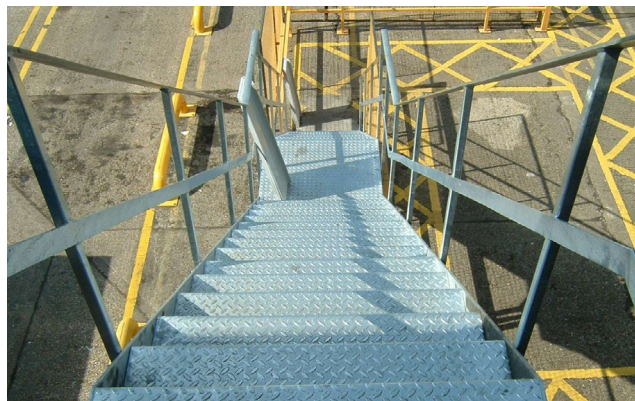
Highly durable anti slip surface for heavy use.
UK DDA and building regulations compliant.
Available in lengths up to 3 mtr and can be easily cut in required dimensions.
Short lead times.
Many colours and sizes.

Distribution:
Repair Management Nederland B.V.



rmn

Repair Management Nederland B.V.
More management less firefighting



Swiss Solutions Stair Tread Covers HD

Creating a safer environment

Technical data

Standard lengths for stair treads:

600mm
750mm
800mm
1000mm
1200mm
1500mm
2000mm
3000mm

Stair treads profile: 345mm x 55mm
Cut to size service: Yes
Tolerances (including cut): +/- 3-4mm
Thickness: 5/6mm
Service temperature: -20°C to 80°C
Fire retardant: ASTM D 635

Available colours:

Black with yellow nose
Grey with yellow nose
Stone with stone nose
Stone with white nose
Black with white nose
Coarse grite, all other colours only in fine grit available.

Impact resistant: Yes
Corrosion resistant: Yes
Chemical resistant: Yes
Lightweight: Yes
Non sparking: Yes
Non Metallic: Yes

Slip resistance test results

Slip Grip Heavy Duty GRP slip resistance levels measured using the Pendulum Test method (WF rubber slider).

Slip resistance of a floor for able bodied pedestrians. The higher the value the safer the floor.

Top surface	Dry reading	Wet reading	Four S Pendulum value	Potential for slip
Coarse grit	76	70	Above the 65	Extremely low
Fine grit	71	63	35 to 65	Low
			25 to 35	Moderate
			25 and lower	High

To ensure that the above slip resistant levels are maintained the panels should be kept clean in accordance with the information

Cleaning and maintenance

Use of a stiff brush will usually be sufficient when cleaning the Slip Grip Stair Treads HD to remove every day dirt. For more stubborn items, it is recommended that a mild detergent such as a mild degreaser is used and than rinsed with cold water. It is important to remove any excess water from the stair threads prior to being put back into use with suitable absorbent materials. Where circumstances allow, Slip Grip Stair Treads HD can be power washed on a low setting. If Slip Grip Heavy Duty Stair Treads has been sealed with a sealant; repeated use of a pressure washer could undermine the integrity of the sealant. The security of the fixings should be checked on regular basis. Circumstances will vary, based upon the volume of foot traffic etc., but as guide, monthly inspections would be advisable.

Handling & storage

Safe handling practices should always be employed and the appropriate Personal Protection Equipment is to be worn. Store the stair treads flat and upside down.

Personal protection equipment

It is recommended that the following Personal Protection Equipment is worn for installation of the Slip Grip flat sheets and stair treads and further protective measures may be necessary but this will depend on the installation environment:

Bonding: Use eye goggles, protective gloves, safety boots

Cutting & mechanical fixing: Use ear defenders, eye goggles, dust mask (Fine dust), protective gloves, safety boots.



Swiss Solutions Stair Tread Covers HD

Creating a safer environment

Cutting

Slip Grip Stair Tread Covers can be cut to size using an angle grinder with diamond blade. Cutting should be carried out externally or where there is dust extraction or suitable ventilation and appropriate protective equipment as described should be worn. A jigsaw can be used for trimming or for occasions where only a small amount of cutting is required. Use a laminating jig saw cutting blade.

Cut to size service: It is possible to order the sheets pre-cut to your requirements. Lead time will be longer.

Preparation

Ensure that the area is clean, dry and free of loose and friable material. Any "dished" or damaged surface areas should be patch repaired to provide a reasonably flat and consistent surface.

Dry fit all Stair Tread Covers to ensure they fit freely and that they sit flat down on the surface. If required, Stair Tread Covers can be trimmed on site to suit, ideally using a small grinder with diamond blade or a skill saw with special blade.

Please ensure that goggles, dust mask and gloves are worn at all times when form of cutting is involved.

Fixing kit application

Apply at the underside of the Stair Tread Cover HD special adhesive in approx. 25mm from the edges. Working on a porous surface requires a surface primer to ensure a good adhesion of the adhesive to the substrate. Prior to applying any adhesive it is advisable to carry out a dry-fit first to ensure a suitable fit. Next step is to make a mechanical fixing. The adhesive fixing is the double fixing method offers a secondary fixing in the unlikely event that a mechanical fixing fails. The adhesive also works as a sealant and can be used to seal around the edges and stop water lying in between the Stair tread Covers and the substrate. Water will not affect the Stair Tread Covers but can affect the substrate causing rot or rust.

Mechanical fixing

Slip Grip Stair Tread Covers HD can be drilled and secured with stainless steel fixing screws. It is recommended to use the flooring sheet fixing kit available from Swiss Solutions. Follow the preparation procedure prior to fixing.

- 1) Always ensure that the screw length is slightly longer than the plug length to obtain a good fixing if not using the Swiss Solutions fixing kit.
- 2) Use Mastic adhesive on the underside to prevent the GRP drumming and rocking on the substrate.
- 3) Fixing is generally recommended at approximately: 70mm from the front, 50mm from each side, 60mm from the back, at a maximum of 250mm apart.
- 4) If fitting to a metal substrate, use self-tapping screws. There is no need to counter sink the screw holes since the screw can be tightened so that it beds into the gritted surface, making it flush with the wearing surface.

Predrilling:

Slip Grip Stair Tread Covers HD can also be predrilled. Lead time will be longer.

The above installation instructions are to be used as a guide. Always employ safe practices. It is recommended to first test the suitability of any fixing method on a small area before carrying out a full installation programme.



Swiss Solutions Stair Tread Covers HD

Creating a safer environment

