

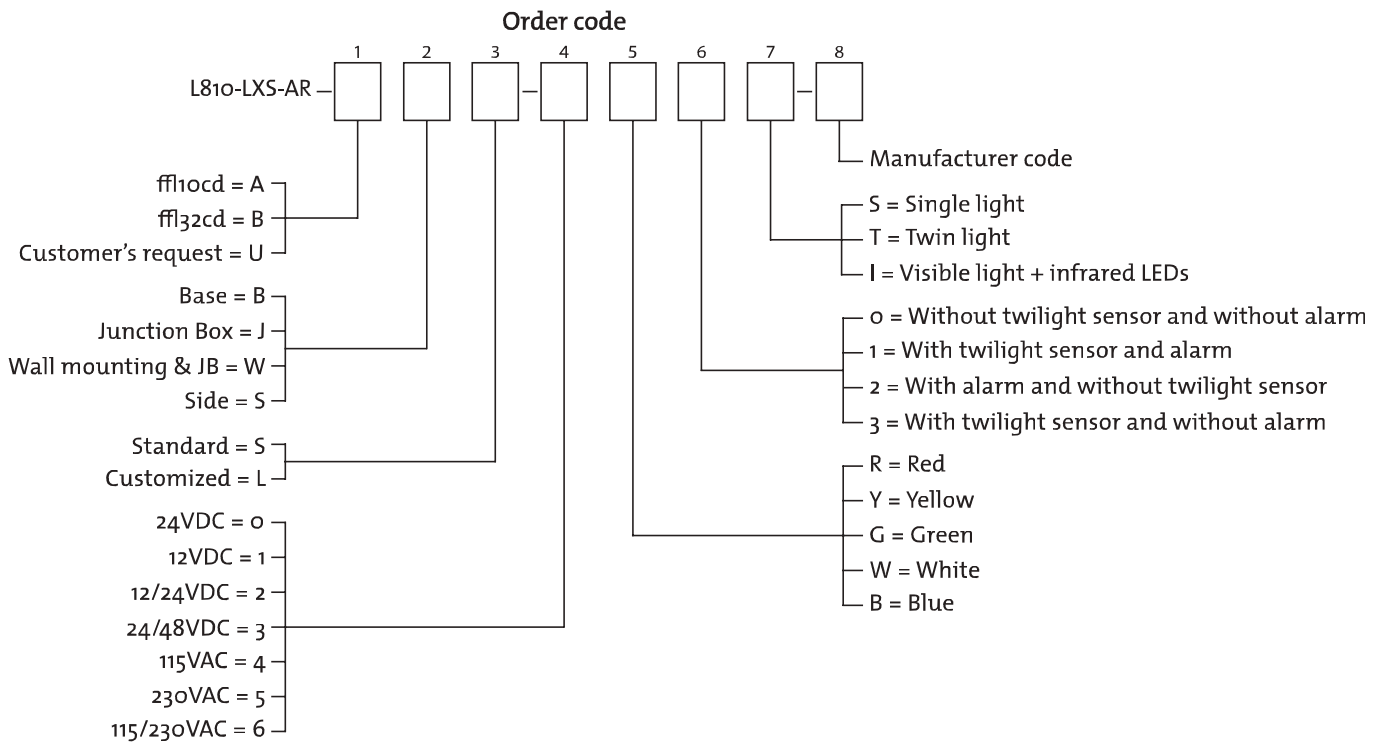
**LIOL-A  
LIOL-B**

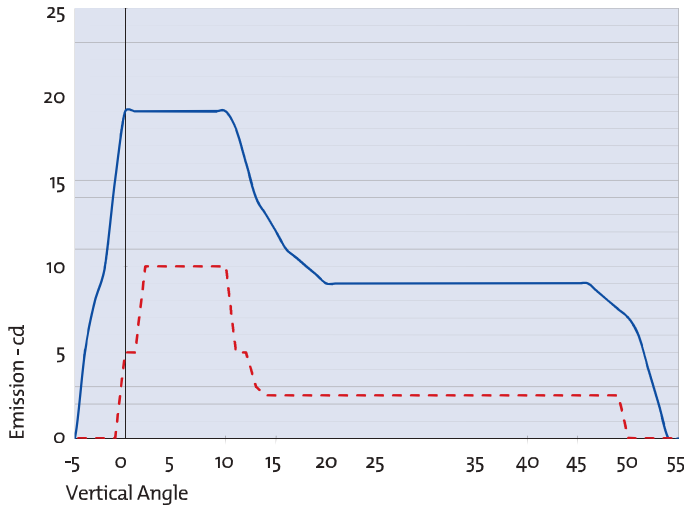


**LOW INTENSITY**

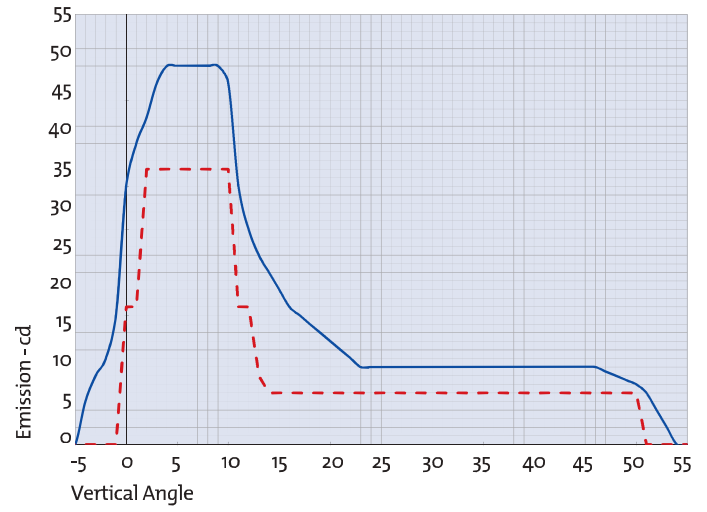
Low intensity obstruction light multiled type, in compliance with ICAO type A/B, FAA L-810 obstacle, night only.

- Based on LED technology
- Steady burning red light
- Long life time >10+ years expectancy
- Stabilized light output
- Protection degree: IP65
- Weight: 0,6 kg
- Power consumption: 4 W





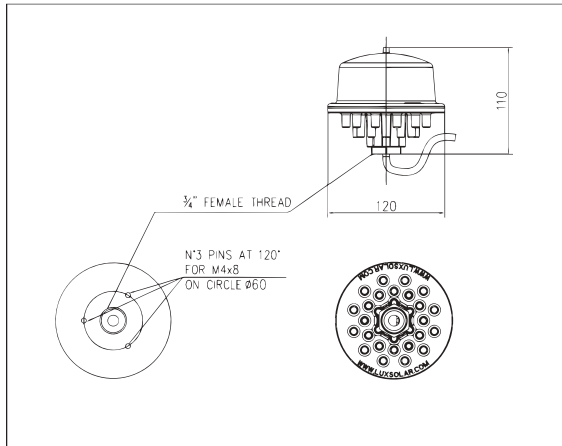
— L810-LXS-A average emission level  
 - - - ICAO ANNEX 14 low intensity type A Minimum Required Intensity



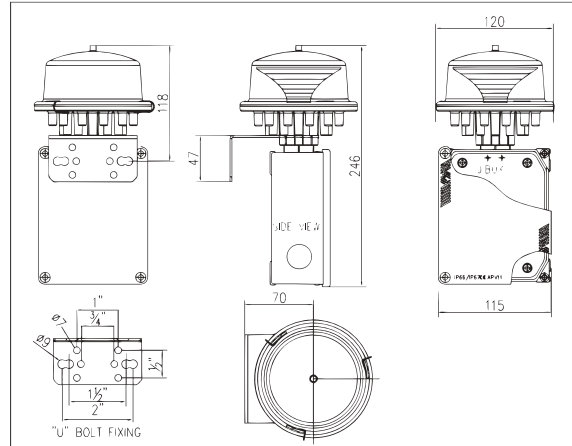
— L810-LXS-B average emission level  
 - - - ICAO ANNEX 14 low intensity type B Minimum Required Intensity

### Order code 2

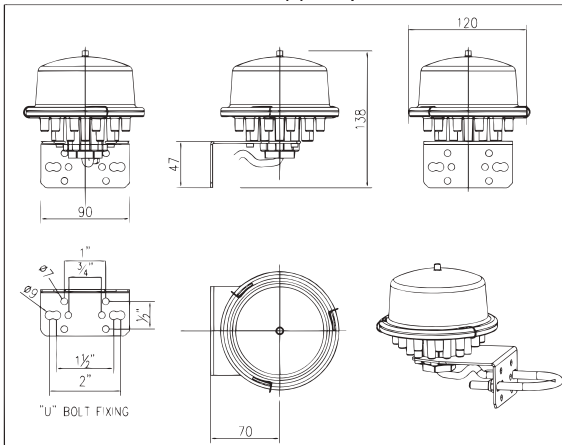
B = Base



W = JB+S



S = Side support plate



J = With JB

