

Vandal-proof Lighting Vyrtych BOXER-LED IP65 IK10 + 40J Variant FC 50J

Antivandal lighting fixture BOXER-LED with dust and splash water resistance is designed for areas with high risk of damage, i.e. prison cells, psychiatric hospitals, gyms and pedestrian subways
Ballast: EP – electronic 220-240 V / 50-60 Hz AC, 220-240V DC 0Hz.

Light source: LED, 4000K, CRI >80, MacAdam3.

Housing: White painted steel sheet RAL 9003.

Diffuser: Polycarbonate (PC) in combination with painted steel frame RAL 9003..

Reflector: Highly polished aluminium sheet.

Fastening: Surface wall or ceiling mounting, recessed via frame for recessed installation or corner mounted via set for corner installation.

Connection: Screw connector three-pole terminal block, maximum diameter of wires 2.5 mm2. The lighting fixture is prepared for loop-in (possibility of connection of two cables).

Standard equipment: 2 pcs cable gland, washers with rubber to seal mounting holes, safety screws (it is necessary to order additionally 83VT004778 bit for safety screw with socket head and pin s=3).

Calculated lifetime – LED modules: L80B10 ta30 – 70.000h

L70B10 ta30 – 100.000h

Complies with relevant EMC regulations. Meets photobiological safety according to EN 62471:2009. Suitable for persons with high sensitivity to UV radiation and blue spectrum part.

Protection category IP65, IK10 + 40 J / IK10 + 50J (FC variant).

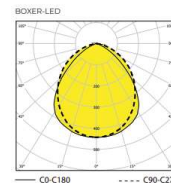
Ta from Min. -20°C to Max. +45/60° depending on type see table.

Optional: EM Non-maintained emergency lighting (1h, 3h), DIM dimmable ballast (DSI, DALI), Colour temp. 2.700K - 6.500K, MW Sensor, MULTI maintained emergency light (1h, 3h), RAL other colour scale, NEREZ housing produced from Stainless Steel (AISI 304 or AISI 316) in case of stainless steel version its declared for ambient temperature decreased about 5-10°C. Hardened safety glass, NIGHT LIGHT - equipped with 4-8W LED source for night-time lighting 3K or 4K, NANO – lighting fixtures can be protected by special nano-layer (hydrophobic oleophobic or antibacterial protection)

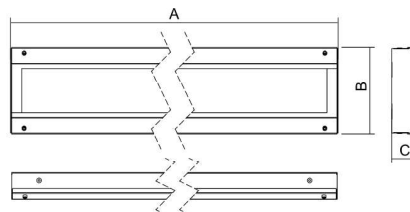
Tolerance of luminous flux and power input of the lighting fixture +/- 10%.

Special installation box available in case of corner installation, recessed frame.

The FC variant is equipped with a frame that covers the luminaire body and impact resistance is 50J. The standard version is equipped with a frame that covers the luminaire body by 10mm and impact resistance is 40J.



Type Standard left picture
Type FC right picture



BOXER-LED

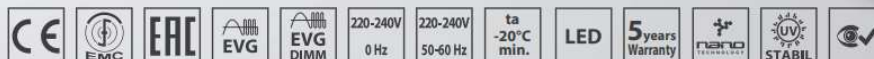
IP 65



IK10 + 40J



IK10 + 50J
variante FC



Article No. Standard	Article No. FC	Description	Wattage	Lumen output lm	Ta Max (°C)	IP Class	Dimension AxBxC mm Standard	Dimension AxBxC mm FC	Mounting space DxExF mm	Colour Kelvin
83VT053495	83VT053495FC	BOXER 1450-4K	8	1123	55	IP65	421x184x56	426x186x56	320	4000
83VT053489	83VT053489FC	BOXER 1450-4K	11	1413	55	IP65	421x184x56	426x186x56	320	4000
83VT053494	83VT053494FC	BOXER 1450-4K	18	2393	60	IP65	701x184x56	706x186x56	540	4000
83VT053491	83VT053491FC	BOXER 1450-4K	22	2826	60	IP65	701x184x56	706x186x56	540	4000
83VT053497	83VT053497FC	BOXER 1450-4K	36	4786	55	IP65	1257x184x56	1262x186x56	550x550	4000
83VT053487	83VT053487FC	BOXER 1450-4K	41	5368	55	IP65	1257x184x56	1262x186x56	550x550	4000
83VT053499	83VT053499FC	BOXER 1450-4K	48	6350	45	IP65	1519x184x56	1524x186x56	680x680	4000
83VT053485	83VT053485FC	BOXER 1450-4K	51	6710	45	IP65	1519x184x56	1524x186x56	680x680	4000

Accessories:

Article No.	Description
83VT004778	Bit for safety screw with socket head an pin s=3
83VT053412	Recessed frame BOXER-LED 421mm
83VT053413	Recessed frame BOXER-LED 701mm
83VT053414	Recessed frame BOXER-LED 1257mm
83VT053415	Recessed frame BOXER-LED 1519mm

Article No.	Description
83VT053416	Corner frame BOXER-LED 421mm
83VT053417	Corner frame BOXER-LED 701mm
83VT053418	Corner frame BOXER-LED 1257mm
83VT053419	Corner frame BOXER-LED 1519mm

