

Replacement cable for electrical hand tools
Plugs standard EU & Heavy Duty
Receptacles Multiway
Perilex wiring accessoires
ABL Schuko wiring accessories
Reducing plugs

Cable neoprene 2-core Class II H07RN-F

For double insulated electrical tools.
 Equipped with vulcanized rubber plug 2-pole.
 Connection side with non insulated end terminals.

Number	Length	Type
770180	3 mtr	2x1,0 mm ²
770179	5 mtr	2x1,0 mm ²
770181	10 mtr	2x1,0 mm ²
770182	3 mtr	2x1,5 mm ²
770183	5 mtr	2x1,5 mm ²
770185	10 mtr	2x1,5 mm ²



Cable neoprene 3-cor Class I H07RN-F

For electrical tools with earth connection.
 Equipped with vulcanized rubber plug 2-pole + earth.
 Connection side with non insulated end terminals.

Number	Length	Type
770184	5 mtr	3x1,5 mm ²
770186	10 mtr	3x1,5 mm ²



Rubber connection plugs

Number	Description
770330	Rubber male plug 2P+E Short model Nom. Voltage 250V 16A IP44 Cable lock. European type. For wires up to 3x1,5mm ²
770331	Rubber female connector 2P+E Short model Nom. Voltage 250V 16A IP44 Cable lock. European type. For wires up to 3x1,5mm ²
770330ABL	Rubber SCHUKO plug 2 P+E Long model. Cable lock. Nom. Voltage 250V 16A IP44 ABL Sursum, with twin earthing system, French/Belgium standard. For wires up to 3x1,5mm ²
770331ABL	Rubber SCHUKO female connector 2P+E Long model. Cable lock. Nom. Voltage 250V 16A IP44 ABL Sursum, with twin earthing system, French/Belgium standard. For wires up to 3x1,5mm ²
770333	Rubber 3-way female connector 2P+E for wires up to 3x2,5mm ² Nom. Voltage 250V 16A IP44 With cable lock. ABL Sursum
770334	Rubber female connector 2P+E Long model with collar. With cable lock. Nom. Voltage 250V 16A IP44 ABL Sursum, with twin earthing system, French/Belgium standard. For wires up to 3x1,5mm ²



ABL SCHUKO PROFESSIONAL

Number	Description
--------	-------------

77ABL1173503	Rubber 3-way female connector 2P+AE for wires up to 3x2,5mm ² Nom. Voltage 250V 16A IP54 With cable lock. Black colour. ABL Sursum Self-closing lid, voltage indicator.
--------------	---

77ABL1173543	Rubber 3-way female connector 2P+AE for wires up to 3x2,5mm ² Nom. Voltage 250V 16A IP54 With cable lock. Black/red colour. ABL Sursum Self-closing lid, voltage indicator.
--------------	---

77ABL1173563	Rubber 3-way female connector 2P+AE for wires up to 3x2,5mm ² Nom. Voltage 250V 16A IP54 With cable lock. Black/grey colour. ABL Sursum Self-closing lid, voltage indicator.
--------------	--



Number	Description
--------	-------------

77ABL1529100	Elamid 2K male plug With quick release fastener and twin earthing. 2P+E for wires up to 3x2,5mm ² Nom. Voltage 250V 16A IP54 With cable lock. Black colour. ABL Sursum, French/Belgium standard.
--------------	--

77ABL1529140	Elamid 2K male plug With quick release fastener and twin earthing. 2P+E for wires up to 3x2,5mm ² Nom. Voltage 250V 16A IP54 With cable lock. Black/red colour. ABL Sursum, French/Belgium standard.
--------------	--

77ABL1529160	Elamid 2K male plug With quick release fastener and twin earthing. 2P+E for wires up to 3x2,5mm ² Nom. Voltage 250V 16A IP54 With cable lock. Black/grey colour. ABL Sursum, French/Belgium standard.
--------------	---



Nummer	Omschrijving
--------	--------------

77ABL1529200	Elamid 2K female connector With quick release fastener and twin earthing. 2P+E for wires up to 3x2,5mm ² Nom. Voltage 250V 16A IP54 With cable lock. Black colour. ABL Sursum, French/Belgium standard. Self-closing lid, voltage indicator.
--------------	---

77ABL1529240	Elamid 2K female connector With quick release fastener and twin earthing. 2P+E for wires up to 3x2,5mm ² Nom. Voltage 250V 16A IP54 With cable lock. Black/red colour. ABL Sursum, French/Belgium standard. Self-closing lid, voltage indicator.
--------------	---

77ABL1529260	Elamid 2K female connector With quick release fastener and twin earthing. 2P+E for wires up to 3x2,5mm ² Nom. Voltage 250V 16A IP54 With cable lock. Black colour. ABL Sursum, French/Belgium standard. Self-closing lid, voltage indicator.
--------------	---



ABL SCHUKO PROFESSIONAL Thermoplastic pressurised water-impermeable

Number	Description
--------	-------------

77ABL1979850	Thermoplastic male plug IP68 pressurised water-impermeable. 2P+E for wires up to 3x2,5mm ² Nom. Voltage 250V 16A IP68 With cable lock. Colour Blue. Equipped with protective cap. ABL Sursum.
--------------	--

77ABL1989850	Thermoplastic male plug panel mount IP68 pressurised water-impermeable. 2P+E for wires up to 3x2,5mm ² Nom. Voltage 250V 16A IP68 With cable lock. Colour Blue. Equipped with protective cap. ABL Sursum.
--------------	--

77ABL1976850	Thermoplastic female connector IP68 pressurised water-impermeable. 2P+E for wires up to 3x2,5mm ² Nom. Voltage 250V 16A IP68 With cable lock. Colour Blue. Equipped with protective cap with rubber seal. ABL Sursum.
--------------	--



ABL SCHUKO HIGHTECH ELAMID Splash Proof

Number	Description
--------	-------------

77ABL1519150	Elamid male plug 2P+E for wires up to 3x2,5mm ² Nom. Voltage 250V 16A IP44 With cable lock. Double earthing system. ABL Sursum, Fraench/Belgium standard. Colour Blue
--------------	---

77ABL1519140	Elamid male plug 2P+E for wires up to 3x2,5mm ² Nom. Voltage 250V 16A IP44 With cable lock. Double earthing system. ABL Sursum, Fraench/Belgium standard. Colour Red
--------------	--

77ABL1519100	Elamid male plug 2P+E for wires up to 3x2,5mm ² Nom. Voltage 250V 16A IP44 With cable lock. Double earthing system. ABL Sursum, Fraench/Belgium standard. Colour Black
--------------	--

Number	Description
--------	-------------

77ABL1579150	Elamid female connector 2P+E for wires up to 3x2,5mm ² Nom. Voltage 250V 16A IP44 With cable lock. Double earthing system. ABL Sursum, Fraench/Belgium standard. Colour Blue
--------------	--

77ABL1579140	Elamid female connector 2P+E for wires up to 3x2,5mm ² Nom. Voltage 250V 16A IP44 With cable lock. Double earthing system. ABL Sursum, Fraench/Belgium standard. Colour Red
--------------	---

77ABL1579100	Elamid female connector 2P+E for wires up to 3x2,5mm ² Nom. Voltage 250V 16A IP44 With cable lock. Double earthing system. ABL Sursum, Fraench/Belgium standard. Colour Black
--------------	---



Number	Description
77ABL1579350	Elamid female connector with cover 2P+E for wires up to 3x2,5mm ² Nom. Voltage 250V 16A IP44 With cable lock. Double earthing system. ABL Sursum, Fraench/Belgium standard. Colour Blue
77ABL1579340	Elamid female connector with cover 2P+E for wires up to 3x2,5mm ² Nom. Voltage 250V 16A IP44 With cable lock. Double earthing system. ABL Sursum, Fraench/Belgium standard. Colour Red
77ABL1579300	Elamid female connector with cover 2P+E for wires up to 3x2,5mm ² Nom. Voltage 250V 16A IP44 With cable lock. Double earthing system. ABL Sursum, Fraench/Belgium standard. Colour Black



Number	Description
770335	Plug Male PVC heavy duty 2P+E European model Nom. Voltage 230V 10A For wires up to 3x1,5mm ² With cable lock. Colour white.
770335ABLG	Plug Male Duroplast 2P+E ABL Sursum. European model Nom. Voltage 230V 16A For wires up to 3x1,5mm ² With cable lock. Colour light grey.
770335ABLW	Steker Duroplast 2P+E ABL Sursum. Europees model Nom. Spanning 230V 16A For wires up to 3x1,5mm ² With cable lock. Colour white.
770338	Female connector Duroplast 2P+E Kaiser Duroplast IP00 European model Nom. Voltage 230V 10A For wires up to 3x1,5mm ² With cable lock. Colour white.
770338ABLG	Female connector PVC 2P+E ABL Sursum IP00 European model Nom. Voltage 230V 16A For wires up to 3x1,5mm ² With cable lock. Colour light grey.
770338ABLW	Female connector PVC 2P+E ABL Sursum IP00 European model Nom. Voltage 230V 16A For wires up to 3x1,5mm ² With cable lock. Colour white.
770335ABL	Male Plug Thermoplast 2P+E ABL Sursum. European model Nom. Voltage 230V 16A For wires up to 3x1,5mm ² With cable lock. Colour white.
770335H	Male Angle Plug PVC 2P+E Kaiser PVC IP20 European model Nom. Voltage 230V 16A For wires up to 3x1,5mm ² With cable lock. Colour black.



Reducing plugs and travel plugs

Number Description

77178554 Reducing plug UK/EUR
UK flat poles
EUR round poles + earth
UK flat poles



Number Description

7743632 Reducing plug EUR/UK
EUR round poles + earth
UK flat poles
UK flat poles

Number Description

770350 Reducing plug Kaiser 2xEuro
Travel plug single to double EURO
230V 10A class 2
2P+E colour white
Kaiser 697/KWS



Number Description

770337B Reducing plug Kaiser UK to EURO
Single travel plug.
230V 10A class 2
2P+E colour white incl. fuse.
Kaiser 148/KWS



Number Description

770337C Reducing plug Kaiser USA to EURO
Single travel plug.
USA 125V/15A round earth pole
2P+E colour white
Kaiser 106/KWS



Portable mains distribution boards Kaiser Martin Germany with cable

Number Description

770339 Distribution board Kaiser Martin
250V 16A 2P+E H05VV-F 3x1,5mm² white
Cover polypropylene
According to DIN VDE 0620-1:2005 and
DIN 49 440 Part 1
2-way with 1,5mtr cable.
Type 1020/ZL/15W/KWS



770340 Distribution board Kaiser Martin
250V 16A 2P+E H05VV-F 3x1,5mm² white
Cover polypropylene
According to DIN VDE 0620-1:2005 and
DIN 49 440 Part 1
3-way with 3mtr cable.
Type 1045ZL3-15W/KWS

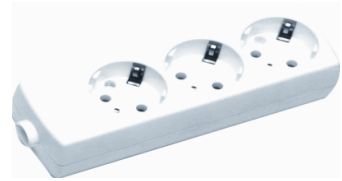


770341 Distribution board Kaiser Martin
250V 16A 2P+E H05VV-F 3x1,5mm² white
Cover polypropylene
According to DIN VDE 0620-1:2005 and
DIN 49 440 Part 1
4-way with 1,5mtr cable.
Type 1046ZL3-15W/KWS



Portable mains distribution boards Kaiser Martin Germany without cable

Number	Description
770342	Distribution board Kaiser Martin 250V 16A 2P+E white Cover polypropylene According to DIN VDE 0620-1:2005 and DIN 49 440 Part 1 3-way without cable. Type 1047/KWS
770343	Distribution board Kaiser Martin 250V 16A 2P+E white Cover polypropylene According to DIN VDE 0620-1:2005 and DIN 49 440 Part 1 4-way without cable. Type 1048/KWS



Kaiser-Martin mains distribution boards Industrial type

Number	Description
780300	Distribution board Kaiser Martin 250V 16A 2P+E with switch Cover Polyamide 6 According to DIN VDE 0620-1:2005 and DIN 49 440 Part 1 4-way with 3mtr 3x1,5mm ² cable. Type 1001
780304A	Distribution board Kaiser Martin 250V 16A 2P+E with switch Cover Polyamide 6 According to DIN VDE 0620-1:2005 and DIN 49 440 Part 1 10-way with 5mtr 3x1,5mm ² cable. Type 1001



Number	Description
780302	Distribution board Kaiser Martin 250V 16A 2P+E without switch Cover Polyamide 6 According to DIN VDE 0620-1:2005 and DIN 49 440 Part 1 6-way with 1,5mtr 3x1,5mm ² cable. Type 1002
780303	Distribution board Kaiser Martin 250V 16A 2P+E without switch Cover Polyamide 6 According to DIN VDE 0620-1:2005 and DIN 49 440 Part 1 8-way with 1,5mtr 3x1,5mm ² cable. Type 1002
780304	Distribution board Kaiser Martin 250V 16A 2P+E without switch Cover Polyamide 6 According to DIN VDE 0620-1:2005 and DIN 49 440 Part 1 10-way with 1,5mtr 3x1,5mm ² cable. Type 1002



Mains distribution board with earthing contact, surge protection, interference filter.

Ideal for computers, monitors and other sensitive equipment.

Number	Description
--------	-------------

780305	Distribution board Brennenstuhl 250V 50Hz 16A 2P+E with switch Robust impact resistant cover. Surge protection 4.500A Type Super Solid 5-way with 2,5mtr 3x1,5mm ² cable.
--------	---



Number	Description
--------	-------------

780306	Distribution board Kaiser Martin 250V 16A 2P+E with switch Cover Polyamide 6 With interference filter >50 dB. Equipped with surge protection. Internal fuse 10A According to DIN VDE 0620-1:2005 and DIN 49 440 Part 1 6-way with 1,5mtr 3x1,5mm ² cable. Type 1135ZL
--------	---



Perlixex wiring accessories for indoor use.

230 Volt 5-pole white 16Amp

Number	Description
--------	-------------

7745800	Perilex receptacle surface mount 230V 16A 5P Protection class IP 00 ABL Sursum
---------	---



7745801	Perilex receptacle flush mont 230V 16A 5P Protection class IP 00 ABL Sursum
---------	--



7743320	Perilex Duroplast Male plug white 400V 16A 3P+N+E Male angle plug 90° Protection class IP 20 ABL Sursum
---------	---



7743320A	Perilex Duroplast Male plug white 400V 16A 3P+N+E Male straight plug Protection class IP 00 ABL Sursum
----------	--



7743320D	Perilex Duroplast female connector white 400V 16A 3P+N+E Female connector straight white Protection class IP 00 ABL Sursum
----------	--



Perilex Mounting plates

Number	Description
--------	-------------

7745801M	Mounting plate for flush mount white
7745800M	Mounting plate for surface mount white
7745800N	Mounting plate for surface mount creme



Perlixex wiring accessoires for outdoor use.

230 Volt 5 pole 16Amp, IP44

Number	Description
7745800B	Perilex Receptacle surface mount grey 230V 16A 5P Protection class IP 44 Dimensions 72x86mm ABL Sursum
7745803	Perilex Receptacle flush mount white 230V 16A 5P Protection class IP 44 Dimensions 68x68mm ABL Sursum
7743320	Perilex Duroplast Male plug white 400V 16A 3P+N+E Male angle plug 90° Protection class IP 20 ABL Sursum



Perlixex wiring accessoires for indoor use.

230 Volt 5 pole white 25Amp

Number	Description
7745800C	Perilex Receptacle surface mount white 230V 25A 5P Protection class IP 00 Round model ABL Sursum
7745803C	Perilex Receptacle flush mount white 230V 25A 5P Protection class IP 00 Round model ABL Sursum
7743326	Perilex Duroplast Male plug white 400V 25A 3P+N+E Steker 90° haaks model Protection class IP 00 ABL Sursum

