

DAY



LINEAR LED LUMINAIRE

DOUBLEPOWER!! DAY

**AN EXCEPTIONALLY FLEXIBLE LINEAR LED LUMINAIRE
WITH HIGH EFFICIENCY AND LOW GLARE**

- Original concept with many possible output variations and lighting characteristics
- Luminaire efficacy up to 165 lm/W
- Low glare factor
- Life-span L80B50 over 105,000 hours
- IP20-IP66 enclosure rating
- Unlimited 6-8 year guarantee

doublepower!!
industrial lighting | intelligent | efficient

Primary characteristics

- Exceptional modularity thanks to free combinations of 1 to 8 modules with varying performance and lighting characteristics
- Luminaire efficacy up to 165 lm/W at Ta 45 °C.
- Low level of glare and very comfortable lighting conditions thanks to the luminaire's special construction and selected optical system
- Luminaire life-span L80B50 over 105,000 hours at Ta 45 °C
- IP20-IP66 enclosure rating
- Both clear and opal enclosures available
- Selectable frame for additional decrease of glare factor
- Easy connection via connector, sleeve, or bushing

Extreme modularity and variability

We provide the doublepower!! DAY luminaire in HE (= High Efficiency = maximum luminaire efficacy) and HO (= High Output = maximum luminous flux) versions. The possibility to freely combine up to 8 modules with varying performance and lighting characteristics makes this luminaire one of the most modular industrial luminaires on the market. It provides extremely efficient illumination solutions that can be adapted to specific conditions and requirements.

Low glare with high efficiency

Despite their high luminaire efficacy, doublepower!! DAY luminaires provide perfect luminous comfort without the unpleasant glare. They can be installed at all mounting heights and their glare values will stay far below admissible limits at any level of illumination. We have managed to reach high efficiency with low glare via a special optical system and unique placement of lighting surfaces.

Sustainability

Industrial lighting is only truly effective when the lighting conditions, energy consumption, and overall functionality of the system are stable for a sufficient period of time. Just as with our other ranges of industrial luminaires, we have designed doublepower!! DAY with the highest possible requirements on long-term sustainability.

The basic life-span of the luminaire with an L80B10 specification is at least 80,000 hours; with an L80B50 specification it even exceeds 105,000 hours. One factor that lends to such a long life-span is the unique thermal management thanks to the carefully designed aluminum body of the luminaire and low supply currents, which allow the components to operate in exceptional comfort, far below temperature limits.



Connection options
connector / sleeve / bushing.



Extensive mounting options.
Adaptable to a wide variety of track
systems. Přisazené / Panel mounting option.



Options with 3 and 4 modules. Options are available with 1 to 8 modules.



Effective LED chip and driver cooling thanks
to the luminaire's specially designed
aluminum body.



Enclosures perfectly tailored to a specific operation

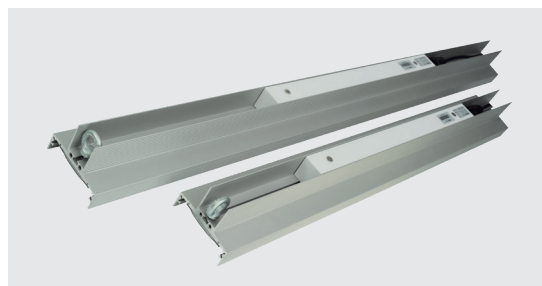
We offer doublepower!! DAY industrial luminaires with enclosure rating levels from IP20 to IP66. We select the design of the glass enclosure according to actual operational conditions and sustainability requirements of all lighting parameters. This also contributes to the efficiency of our lighting solutions.

Easy installation

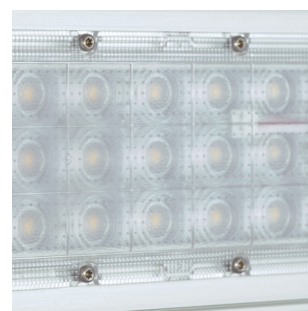
The construction of the luminaires and design variations with a connector, sleeve, or bushing allow for quick, simple, and affordable mounting in all conditions. You can combine the doublepower!! DAY luminaire with various types of lighting mounting and track systems.

Dimensions / cm / kg

version	weight	length	height	width
2 modules	3,2	64,2	8,3	11,2
3 modules	4,4	96,3	8,3	11,2
4 modules	5,6	128,4	8,3	11,2
5 modules	6,8	160,5	8,3	11,2
6 modules	8	192,6	8,3	11,2
7 modules	9,2	224,7	8,3	11,2
8 modules	10,4	256,8	8,3	11,2



The doublepower!! DAY luminaire can be adapted to a wide variety of installation limitations. Thanks to its modularity and variability, it provides truly effective illumination in your operations while ensuring your employees have highly comfortable lighting conditions.



The luminaire's construction and optical system ensure a very low glare factor.

NEED ADDITIONAL INFORMATION? JUST CONTACT US. WE'LL BE HAPPY TO GIVE YOU MORE.
CALL +420 222 312 917 OR EMAIL US AT NA INFO@DOUBLEPOWER.CZ.



Specification	2 modules	3 modules	4 modules	5 modules	6 modules	7 modules	8 modules
Output (High Efficiency Type – HE)	22,6 W	33,9 W	45,2 W	56,5 W	67,8 W	79,1 W	90,4 W
Output (High Output Type – HO)	26 W	39 W	52 W	65 W	78 W	91 W	104 W
Luminous Flux of the Luminaire (HE Type) with 4 000K	3 726 lm	5 588 lm	7 451 lm	9 314 lm	11 177 lm	13 039 lm	14 902 lm
Luminous Flux of the Luminaire (HO Type) with 4 000 K	4 221 lm	6 331 lm	8 441 lm	10 551 lm	12 662 lm	14 772 lm	16 882 lm
Efficacy of the LED chip / luminaire (HE Type)	181 lm/W / 165 lm/W						
Efficacy of the LED chip / luminaire (HO Type)	178 lm/W / 162 lm/W						
LED light source	Samsung 2700K – 6500K						
Life-time of the Luminaire	L80B10 = 80 000 hours, L80B50 = 105 000 hours at Ta +45°C						
Front cover	PMMA optics						
Body	Robust Body from Anodized Aluminium						
	Highly Efficient Thermal Management						
	Low operating temperatures of the luminaire and all components						
Protection rating	IP20 - IP66						
Operating temperatures	-25°C ~ +50°C						
Optical system	Linear lens 60° / 90° / 85°+ 40°, asymmetrical						
Other	No stroboscopic effect						
	DALI/DSI smooth control, possibility to include into a complex DALI/KNX control system						
Manufacturer	doublepower!! s.r.o. Czech Republic						

Lighting Characteristics

